

CD3, CD3E mouse mAb(ABT295)

Catalog No: #33203

Orders: order@signalwayantibody.com

Support: tech@signalwayantibody.com

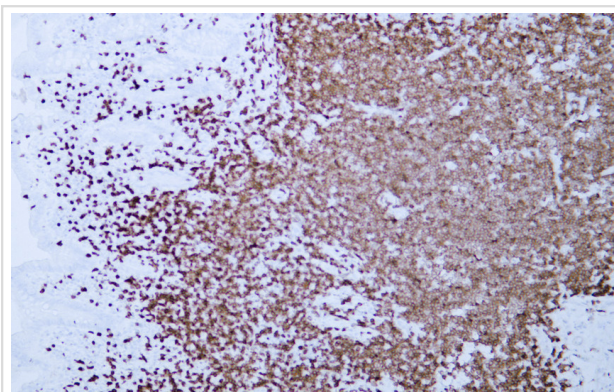
Description

Product Name	CD3, CD3E mouse mAb(ABT295)
Brief Description	Mouse Monoclonal Ab
Host Species	Mouse
Clonality	Monoclonal
Isotype	IgG2a, Kappa
Purification	The antibody was affinity-purified from mouse ascites by affinity-chromatography using specific immunogen.
Applications	IHC,WB,ICC/IF
Species Reactivity	Human
Specificity	The antibody can specifically recognize human CD3e protein, and shows no reaction with CD3d or CD3g. In western blotting of Jurkat cell lysate, the antibody can label a 23KDa band corresponding to CD
Immunogen Description	Synthesized peptide derived from human CD3, CD3E
Target Name	CD3E T3E
Other Names	T-cell surface glycoprotein CD3 epsilon chain (T-cell surface antigen T3/Leu-4 epsilon chain;CD antigen CD3e)
Uniprot	P07766
GeneID	916
Formulation	Liquid in PBS containing 50% glycerol, 0.5% BSA and 0.60% sodium azide.
Storage	Store at -20°C/1 year

Application Details

IHC-p 1:100-500, IF 1:100-500

Images



Human appendix tissue was stained with Anti-CD3 (ABT295) Antibody

Note: This product is for in vitro research use only