

MOX1 Antibody

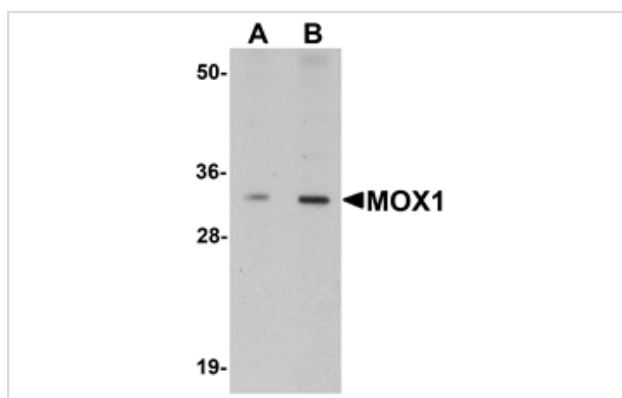
Catalog No: #25196

Orders: order@signalwayantibody.comSupport: tech@signalwayantibody.com

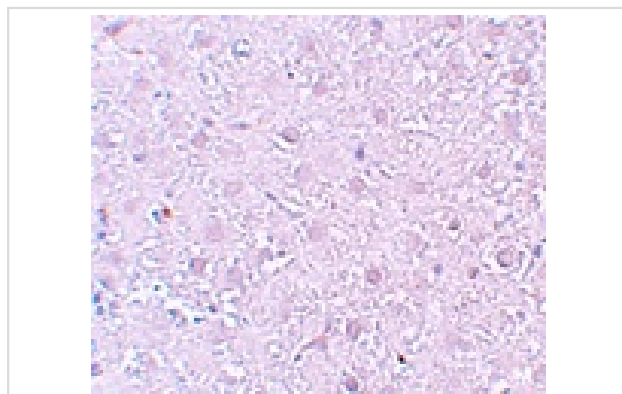
Description

Product Name	MOX1 Antibody
Host Species	Rabbit
Clonality	Polyclonal
Purification	Affinity chromatography purified via peptide column
Applications	ELISA WB ICC
Species Reactivity	Hu Ms Rt
Immunogen Type	Peptide
Immunogen Description	Raised against a 19 amino acid peptide near the center of human MOX1.
Target Name	MOX1
Other Names	Mesenchyme homeobox 1, MEOX1
Accession No.	Swiss-Prot:P50221 Gene ID:4222
Uniprot	P50221
GeneID	4222;
Concentration	1mg/ml
Formulation	Supplied in PBS containing 0.02% sodium azide.
Storage	Can be stored at -20°C, stable for one year. As with all antibodies care should be taken to avoid repeated freeze thaw cycles. Antibodies should not be exposed to prolonged high temperatures.

Images



Western blot analysis of MOX1 in human liver tissue lysate with MOX1 antibody at (A) 1 and (B) 2 ug/mL.



Immunohistochemistry of MOX1 in rat liver tissue with MOX1 antibody at 10 ug/mL.

Background

MOX1, also known as MEOX1, is a member of a subfamily of non-clustered, diverged, antennapedia-like homeobox-containing genes that is first expressed during gastrulation in the early mesoderm and later in presomitic mesoderm, early somites, dermomyotome and sclerotome. Both MOX1 and the related protein MOX2 are required for proper gene expression in all somitic compartments. MOX1 is an upstream regulator of the transcription factors Bapx1, Tbx18, and Uncx and is thus part of a regulatory circuit that functions in the maintenance of rostrocaudal sclerotome polarity and axial skeleton formation.

Note: This product is for in vitro research use only