

PTMA Polyclonal Antibody

Catalog No: #48291

Package Size: #48291-1 50ul #48291-2 100ul

Orders: order@signalwayantibody.com

Support: tech@signalwayantibody.com

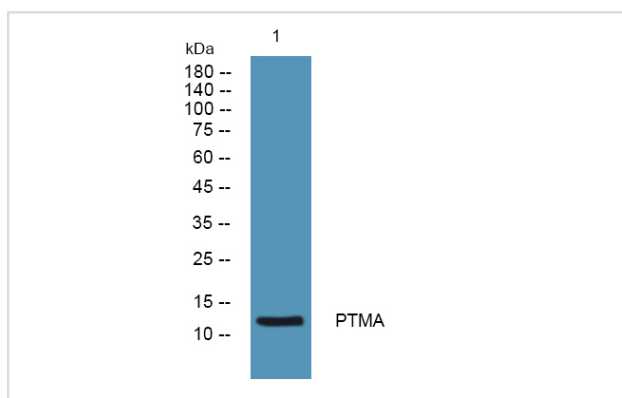
Description

| | |
|-----------------------|---|
| Product Name | PTMA Polyclonal Antibody |
| Host Species | Rabbit |
| Clonality | Polyclonal |
| Isotype | IgG |
| Purification | The antibody was affinity-purified from rabbit antiserum by affinity-chromatography using epitope-specific immunogen. |
| Applications | WB;ELISA |
| Species Reactivity | Human;Mouse |
| Specificity | PTMA Polyclonal Antibody detects endogenous levels of protein. |
| Immunogen Description | Synthesized peptide derived from part region of human protein |
| Target Name | PTMA |
| Uniprot | P06454 |
| GeneID | 5757 |
| Calculated MW | 12kD |
| Concentration | 1 mg/ml |
| Formulation | Liquid in PBS containing 50% glycerol, and 0.02% sodium azide. |
| Storage | Store at -20°C/1 year |

Application Details

WB 1:500-2000 ELISA 1:5000-20000

Images



Western blot analysis of lysates from Jarkat cells, primary antibody was diluted at 1:1000, 4° over night

Note: This product is for in vitro research use only