

T2R14 Polyclonal Antibody

Catalog No: #48293

Package Size: #48293-1 50ul #48293-2 100ul

Orders: order@signalwayantibody.comSupport: tech@signalwayantibody.com

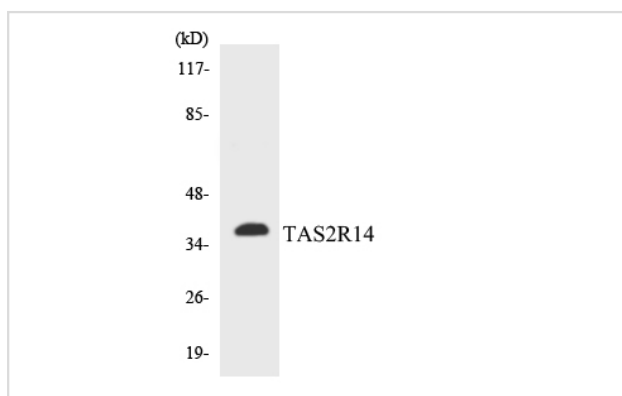
Description

Product Name	T2R14 Polyclonal Antibody
Host Species	Rabbit
Clonality	Polyclonal
Isotype	IgG
Purification	The antibody was affinity-purified from rabbit antiserum by affinity-chromatography using epitope-specific immunogen.
Applications	WB;IHC
Species Reactivity	Human;Rat;Mouse
Specificity	T2R14 Polyclonal Antibody detects endogenous levels of T2R14 protein.
Immunogen Description	The antiserum was produced against synthesized peptide derived from human TAS2R14.
Target Name	TAS2R14
Other Names	TAS2R14; Taste receptor type 2 member 14; T2R14; Taste receptor family B member 1; TRB1
Accession No.	Q9NYV8
Uniprot	Q9NYV8
GeneID	50840
Calculated MW	38kD
Concentration	1 mg/ml
Formulation	Liquid in PBS containing 50% glycerol, 0.5% BSA and 0.02% sodium azide.
Storage	Store at -20°C/1 year

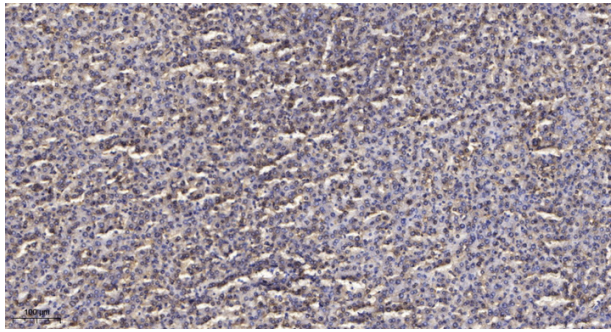
Application Details

WB 1:500-2000;IHC-p 1:50-300

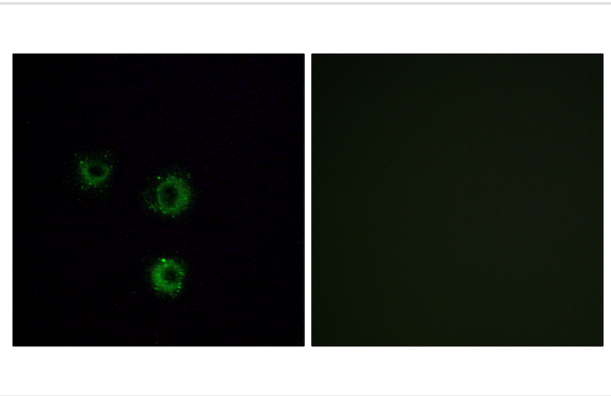
Images



Western blot analysis of the lysates from COLO205 cells using TAS2R14 antibody.



Immunohistochemical analysis of paraffin-embedded human liver cancer.



Immunofluorescence analysis of MCF7 cells, using TAS2R14 Antibody. The picture on the right is blocked with the synthesized peptide.

Note: This product is for in vitro research use only