

WASP (phospho Tyr290) Polyclonal Antibody

Catalog No: #48300

Package Size: #48300-1 50ul #48300-2 100ul

Orders: order@signalwayantibody.com

Support: tech@signalwayantibody.com

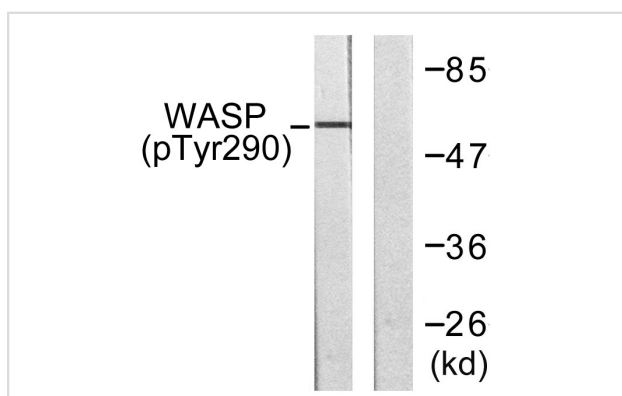
Description

Product Name	WASP (phospho Tyr290) Polyclonal Antibody
Host Species	Rabbit
Clonality	Polyclonal
Isotype	IgG
Purification	The antibody was affinity-purified from rabbit antiserum by affinity-chromatography using epitope-specific immunogen.
Applications	WB;IHC;IF;ELISA
Species Reactivity	Human;Mouse
Specificity	Phospho-WASP (Y290) Polyclonal Antibody detects endogenous levels of WASP protein only when phosphorylated at Y290.
Immunogen Description	The antiserum was produced against synthesized peptide derived from human WASP around the phosphorylation site of Tyr290.
Target Name	WAS
Other Names	WAS; IMD2; Wiskott-Aldrich syndrome protein; WASp
Accession No.	P42768
Uniprot	P42768
GeneID	7454
Calculated MW	60kD
Concentration	1 mg/ml
Formulation	Liquid in PBS containing 50% glycerol, 0.5% BSA and 0.02% sodium azide.
Storage	Store at -20°C/1 year

Application Details

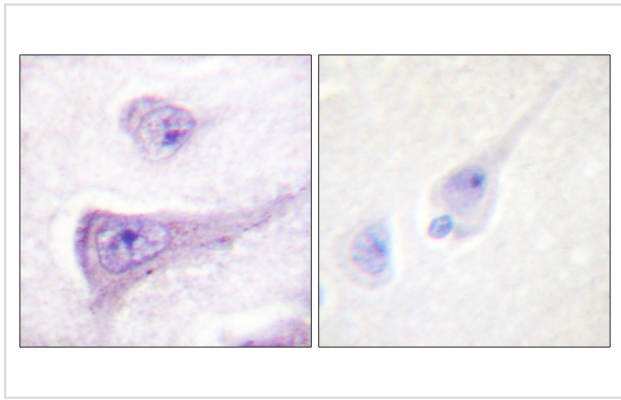
WB: 1/500 - 1/2000. IHC: 1/100 - 1/300. ELISA: 1/5000.. IF 1:50-200

Images



Western blot analysis of lysates from HepG2 cells, using WASP (Phospho-Tyr290) Antibody. The lane on the right is blocked with the phospho peptide.

Immunohistochemistry analysis of paraffin-embedded human brain, using WASP (Phospho-Tyr290) Antibody.



Note: This product is for in vitro research use only