

GINS4 Rabbit pAb

Catalog No: #55652

Package Size: #55652-1 50ul #55652-2 100ul

Orders: order@signalwayantibody.com

Support: tech@signalwayantibody.com

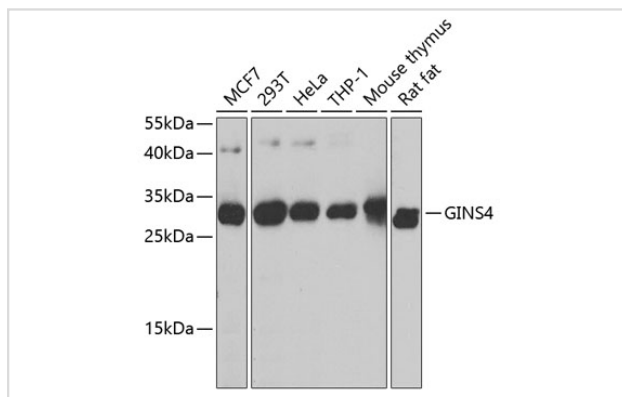
Description

Product Name	GINS4 Rabbit pAb
Isotype	IgG
Purification	Affinity purification
Applications	WB
Species Reactivity	Human, Mouse, Rat
Immunogen Description	Recombinant fusion protein of human GINS4(NP_115712.1).
Other Names	GINS4;SLD5
Uniprot	Q9BRT9
GeneID	84296
Calculated MW	11kDa/26kDa
Formulation	Buffer: PBS with 0.02% sodium azide,50% glycerol,pH7.3.
Storage	Store at -20°C. Avoid freeze / thaw cycles.

Application Details

WB, 1:500 - 1:2000

Images



Western blot analysis of extracts of various cell lines, using GINS4 antibody at 1:1000 dilution. Secondary antibody: HRP Goat Anti-Rabbit IgG (H+L) (AS014) at 1:10000 dilution. Lysates/proteins: 25ug per lane. Blocking buffer: 3% nonfat dry milk in TBST. Detection: ECL Basic Kit. Exposure time: 30s.

Background

The yeast heterotetrameric GINS complex is made up of Sld5, Psf1 (GINS1; MIM 610608), Psf2 (GINS2; MIM 610609), and Psf3 (GINS3; MIM 610610). The formation of the GINS complex is essential for the initiation of DNA replication in yeast and *Xenopus* egg extracts (Ueno et al., 2005 [PubMed 16287864]). See GINS1 for additional information about the GINS complex. [supplied by OMIM, Mar 2008]

Note: This product is for in vitro research use only