

ZDH22 rabbit pAb

Catalog No: #48331

Package Size: #48331-1 50ul #48331-2 100ul

Orders: order@signalwayantibody.comSupport: tech@signalwayantibody.com

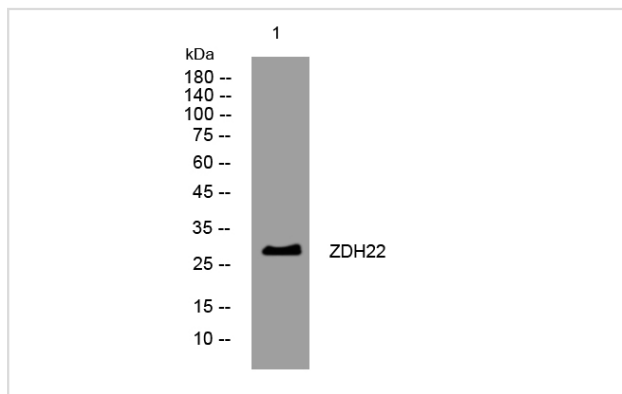
Description

| | |
|-----------------------|-----------------------------------------------------------------------------------------------------------|
| Product Name | ZDH22 rabbit pAb |
| Host Species | Rabbit |
| Clonality | Polyclonal |
| Isotype | IgG |
| Purification | The antibody was affinity-purified from rabbit serum by affinity-chromatography using specific immunogen. |
| Applications | WB |
| Species Reactivity | Human; Mouse;Rat |
| Specificity | This antibody detects endogenous levels of ZDH22 at Human/Mouse/Rat |
| Immunogen Description | Synthesized peptide derived from human ZDH22 |
| Target Name | ZDH22 |
| Uniprot | Q8N966 |
| GeneID | 283576 |
| Calculated MW | 29kD |
| Concentration | 1 mg/ml |
| Formulation | Liquid in PBS containing 50% glycerol, 0.5% BSA and 0.02% sodium azide. |
| Storage | Store at -20°C/1 year |

Application Details

WB 1 μ O 500-2000

Images



Western blot analysis of lysates from MDA-MB cells, primary antibody was diluted at 1:1000, 4° over night

Note: This product is for in vitro research use only