

p300 (PTR2540) Mouse mAb

Catalog No: #48628

Package Size: #48628-1 50ul #48628-2 100ul

Orders: order@signalwayantibody.com

Support: tech@signalwayantibody.com

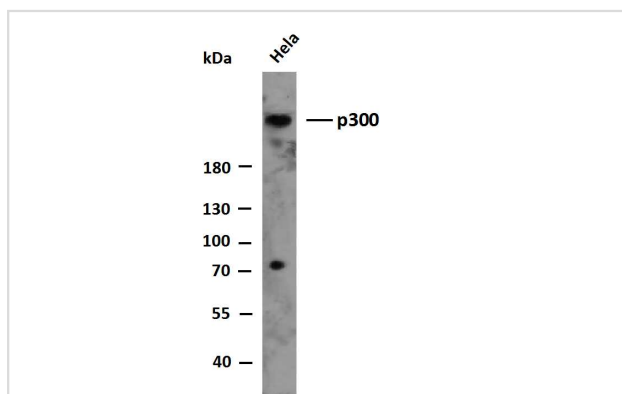
Description

Product Name	p300 (PTR2540) Mouse mAb
Host Species	Mouse
Clonality	Monoclonal
Isotype	IgM,Kappa
Purification	Protein G
Applications	WB,ELISA
Species Reactivity	Human, Mouse
Specificity	This antibody detects endogenous levels of p300 at Human, Mouse
Immunogen Description	Synthesized peptide derived from human p300
Target Name	EP300
Other Names	Histone acetyltransferase p300 (p300 HAT) (EC 2.3.1.48) (E1A-associated protein p300)
Uniprot	Q09472
GeneID	2033
Calculated MW	300kDa
Formulation	PBS, pH7.4, 50% glycerol, 0.03%Proclin 300
Storage	Store at -20°C/1 year

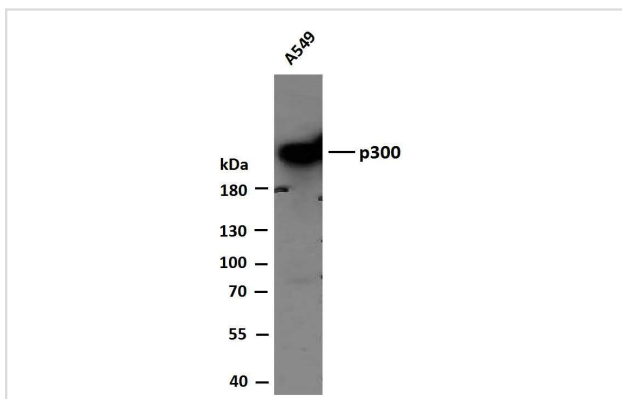
Application Details

WB 1:500-2000 ELISA 1:5000-20000

Images



Whole cell lysates of HeLa were separated by 10% SDS-PAGE, and the membrane was blotted with anti-p300 antibody.



Whole cell lysates of A549 were separated by 6% SDS-PAGE, and the membrane was blotted with anti-p300 antibody.

Note: This product is for in vitro research use only