

## SLC6A14 Polyclonal Antibody

Catalog No: #48661

Package Size: #48661-1 50ul #48661-2 100ul

Orders: [order@signalwayantibody.com](mailto:order@signalwayantibody.com)Support: [tech@signalwayantibody.com](mailto:tech@signalwayantibody.com)

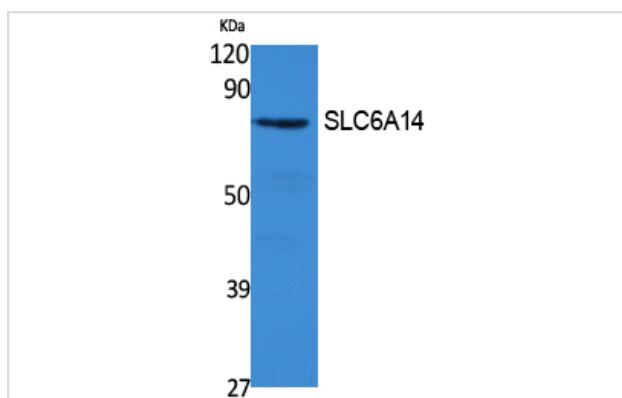
## Description

Product Name	SLC6A14 Polyclonal Antibody
Host Species	Rabbit
Clonality	Polyclonal
Isotype	IgG
Purification	The antibody was affinity-purified from rabbit antiserum by affinity-chromatography using epitope-specific immunogen.
Applications	WB;IHC;IF;ELISA
Species Reactivity	Human Mouse
Specificity	SLC6A14 Polyclonal Antibody detects endogenous levels of SLC6A14 protein.
Immunogen Description	Synthesized peptide derived from the C-terminal region of human SLC6A14.
Target Name	SLC6A14
Other Names	SLC6A14; Sodium- and chloride-dependent neutral and basic amino acid transporter B(0+; Amino acid transporter ATB0+; Solute carrier family 6 member 14
Uniprot	Q9UN76
GeneID	11254
Calculated MW	72kD
Concentration	1 mg/ml
Formulation	Liquid in PBS containing 50% glycerol, 0.5% BSA and 0.02% sodium azide.
Storage	Store at -20°C/1 year

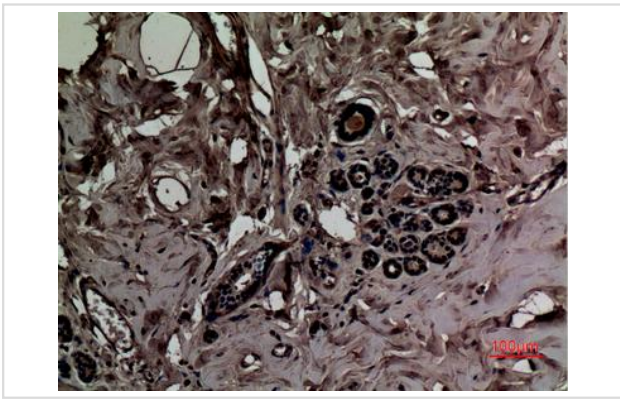
## Application Details

WB 1:500 - 1:2000. IHC-p: 1:100-300 ELISA: 1:40000. IF 1:50-200

## Images



Western Blot analysis of extracts from 293 cells, using SLC6A14 Polyclonal Antibody.



Immunohistochemical analysis of paraffin-embedded human-breast, antibody was diluted at 1:100

---

Note: This product is for in vitro research use only