

Contactin 4 Polyclonal Antibody

Catalog No: #48668

Package Size: #48668-1 50ul #48668-2 100ul

Orders: order@signalwayantibody.comSupport: tech@signalwayantibody.com

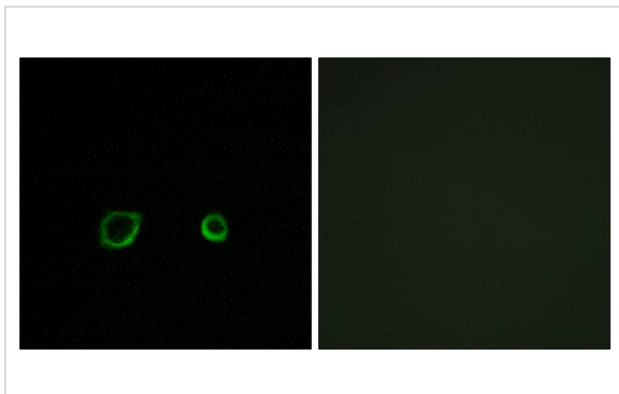
Description

Product Name	Contactin 4 Polyclonal Antibody
Host Species	Rabbit
Clonality	Polyclonal
Isotype	IgG
Purification	The antibody was affinity-purified from rabbit antiserum by affinity-chromatography using epitope-specific immunogen.
Applications	WB;IHC;IF;ELISA
Species Reactivity	Human;Mouse;Rat
Specificity	Contactin 4 Polyclonal Antibody detects endogenous levels of Contactin 4 protein.
Immunogen Description	The antiserum was produced against synthesized peptide derived from human CNTN4.
Target Name	CNTN4
Other Names	CNTN4; Contactin-4; Brain-derived immunoglobulin superfamily protein 2; BIG-2
Uniprot	Q8IWW2
GeneID	152330
Calculated MW	113kD
Concentration	1 mg/ml
Formulation	Liquid in PBS containing 50% glycerol, 0.5% BSA and 0.02% sodium azide.
Storage	Store at -20°C/1 year

Application Details

WB 1:500 - 1:2000. IHC 1:100 - 1:300. ELISA: 1:40000.. IF 1:50-200

Images



Immunofluorescence analysis of A549 cells, using CNTN4 Antibody. The picture on the right is blocked with the synthesized peptide.

Note: This product is for in vitro research use only