

Kv1.3 Polyclonal Antibody

Catalog No: #48791

Package Size: #48791-1 50ul #48791-2 100ul

Orders: order@signalwayantibody.com

Support: tech@signalwayantibody.com

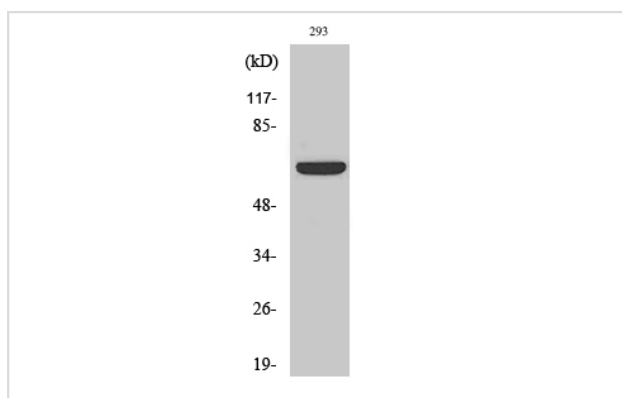
Description

Product Name	Kv1.3 Polyclonal Antibody
Host Species	Rabbit
Clonality	Polyclonal
Isotype	IgG
Purification	The antibody was affinity-purified from rabbit antiserum by affinity-chromatography using epitope-specific immunogen.
Applications	WB;IHC;IF;ELISA
Species Reactivity	Human;Mouse;Rat
Specificity	Kv1.3 Polyclonal Antibody detects endogenous levels of Kv1.3 protein.
Immunogen Description	The antiserum was produced against synthesized peptide derived from human Kv1.3/KCNA3.
Target Name	KCNA3
Other Names	KCNA3; HGK5; Potassium voltage-gated channel subfamily A member 3; HGK5; HLK3; HPCN3; Voltage-gated K(+) channel HuKIII; Voltage-gated potassium channel subunit Kv1.3
Uniprot	P22001
GeneID	3738
Calculated MW	58kD
Concentration	1 mg/ml
Formulation	Liquid in PBS containing 50% glycerol, 0.5% BSA and 0.02% sodium azide.
Storage	Store at -20°C/1 year

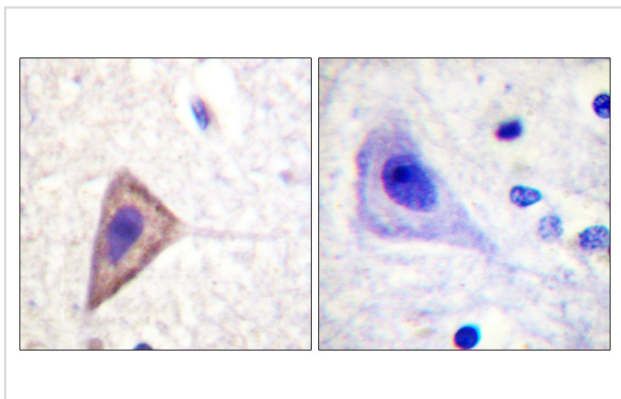
Application Details

WB 1:500 - 1:2000. IHC 1:100 - 1:300. IF 1:200 - 1:1000. ELISA: 1:20000.

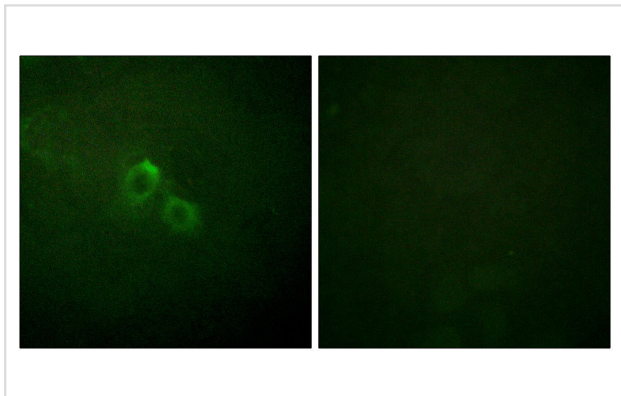
Images



Western Blot analysis of various cells using Kv1.3 Polyclonal Antibody diluted at 1:500



Immunohistochemistry analysis of paraffin-embedded human brain tissue, using Kv1.3/KCNA3 Antibody. The picture on the right is blocked with the synthesized peptide.



Immunofluorescence analysis of HUVEC cells, using Kv1.3/KCNA3 Antibody.

Note: This product is for in vitro research use only