

MerTK/Tyro3 Polyclonal Antibody

Catalog No: #48799

Package Size: #48799-1 50ul #48799-2 100ul

Orders: order@signalwayantibody.comSupport: tech@signalwayantibody.com

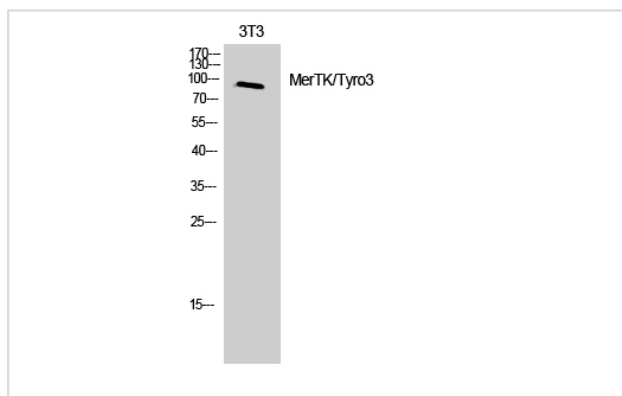
Description

Product Name	MerTK/Tyro3 Polyclonal Antibody
Host Species	Rabbit
Clonality	Polyclonal
Isotype	IgG
Purification	The antibody was affinity-purified from rabbit antiserum by affinity-chromatography using epitope-specific immunogen.
Applications	WB;IHC;IF;ELISA
Species Reactivity	Human;Mouse;Rat
Specificity	MerTK/Tyro3 Polyclonal Antibody detects endogenous levels of MerTK/Tyro3 protein.
Immunogen Description	The antiserum was produced against synthesized peptide derived from human MER/SKY.
Target Name	MERTK/TYRO3
Other Names	MERTK; MER; Tyrosine-protein kinase Mer; Proto-oncogene c-Mer; Receptor tyrosine kinase MerTK; TYRO3; BYK; DTK; RSE; SKY; Tyrosine-protein kinase receptor TYRO3; Tyrosine-protein kinase DTK; Tyrosine-protein kinase RSE; Tyrosine-protein kin
Uniprot	Q12866/Q06418
GeneID	10461/7301
Calculated MW	97kD
Concentration	1 mg/ml
Formulation	Liquid in PBS containing 50% glycerol, 0.5% BSA and 0.02% sodium azide.
Storage	Store at -20°C/1 year

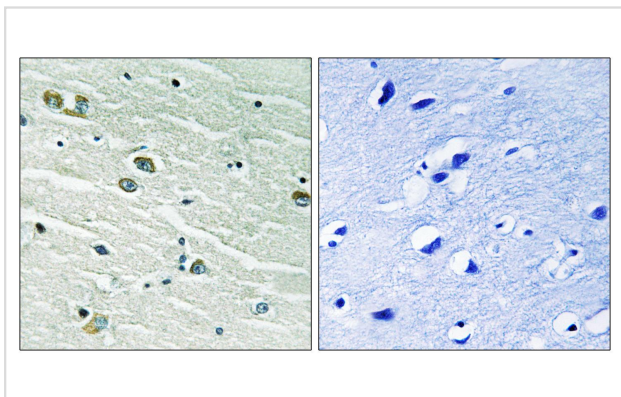
Application Details

WB 1:500 - 1:2000. IHC 1:100 - 1:300. ELISA: 1:20000.. IF 1:50-200

Images



Western Blot analysis of 3T3 cells using MerTK/Tyro3 Polyclonal Antibody



Immunohistochemistry analysis of paraffin-embedded human brain tissue, using MER/SKY Antibody. The picture on the right is blocked with the synthesized peptide.

Note: This product is for in vitro research use only