

## CD105 Polyclonal Antibody

Catalog No: #48806

Package Size: #48806-1 50ul #48806-2 100ul

Orders: [order@signalwayantibody.com](mailto:order@signalwayantibody.com)Support: [tech@signalwayantibody.com](mailto:tech@signalwayantibody.com)

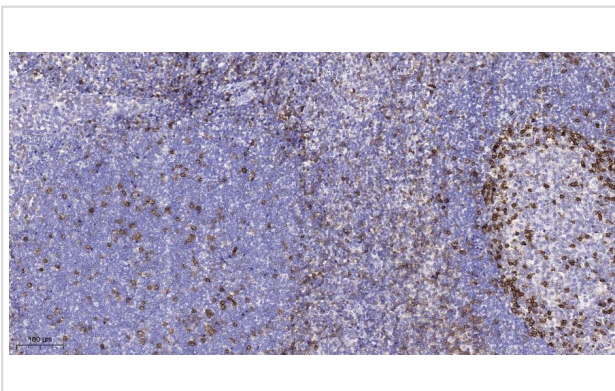
## Description

Product Name	CD105 Polyclonal Antibody
Host Species	Rabbit
Clonality	Polyclonal
Isotype	IgG
Purification	The antibody was affinity-purified from rabbit antiserum by affinity-chromatography using epitope-specific immunogen.
Applications	IHC;IF;WB
Species Reactivity	Human;Mouse;Rat
Specificity	This antibody detects endogenous levels of human CD105
Immunogen Description	Synthesized peptide derived from human CD105
Target Name	ENG END
Other Names	Endoglin (CD antigen CD105)
Uniprot	P17813
GeneID	2022
Calculated MW	72kD
Concentration	1 mg/ml
Formulation	Liquid in PBS containing 50% glycerol, 0.5% BSA and 0.02% sodium azide.
Storage	Store at -20°C/1 year

## Application Details

IHC-p 1:50-200, WB 1:500-2000. IF 1:50-200

## Images



Immunohistochemical analysis of paraffin-embedded human tonsil.

---

Note: This product is for in vitro research use only