

ATG13 Rabbit mAb

Catalog No: #57201

Package Size: #57201-1 50ul #57201-2 100ul

Orders: order@signalwayantibody.comSupport: tech@signalwayantibody.com

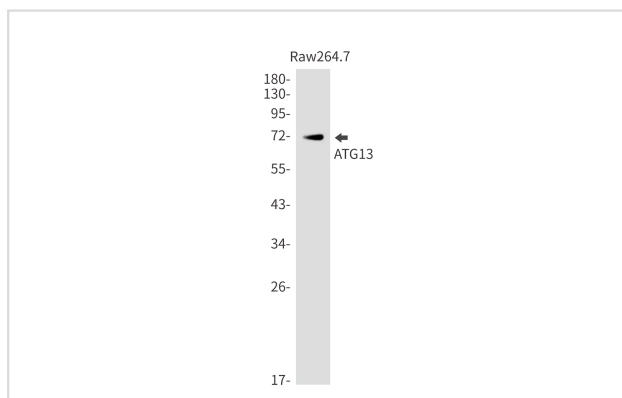
Description

Product Name	ATG13 Rabbit mAb
Host Species	Rabbit
Clonality	Monoclonal
Isotype	Rabbit IgG
Applications	WB IP
Species Reactivity	Human,Mouse,Rat
Immunogen Description	Recombinant protein of human KIAA0652
Other Names	Autophagy-related protein 13
Accession No.	Swiss-Prot:O75143 Gene ID:9776
Uniprot	O75143
GeneID	9776;
Calculated MW	57 kDa
SDS-PAGE MW	72 kDa
Formulation	50mM Tris-Glycine(pH 7.4), 0.15M NaCl, 40% Glycerol, 0.01% Sodium azide and 0.05% BSA
Storage	Store at 4°C short term. Aliquot and store at -20°C long term. Avoid freeze/thaw cycles.

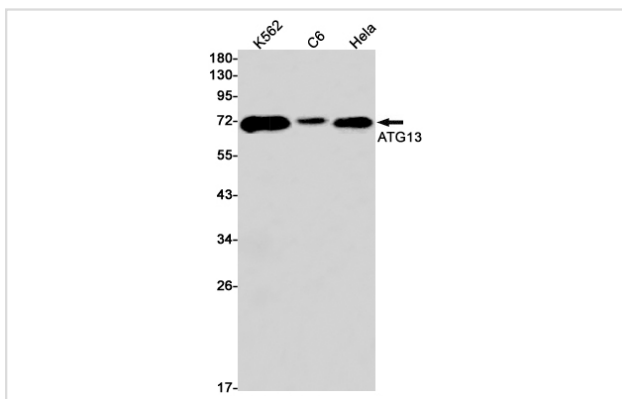
Application Details

IP:1/20WB: 1/500-1/1000

Images



Western blot analysis of ATG13 in Raw264.7 lysates using ATG13 antibody.



Western blot analysis of ATG13 in K562, C6, HeLa lysates using ATG13 antibody.

Note: This product is for in vitro research use only