

## Neurofilament light polypeptide Rabbit mAb

Catalog No: #57212

Package Size: #57212-1 50ul #57212-2 100ul

Orders: order@signalwayantibody.com

Support: tech@signalwayantibody.com

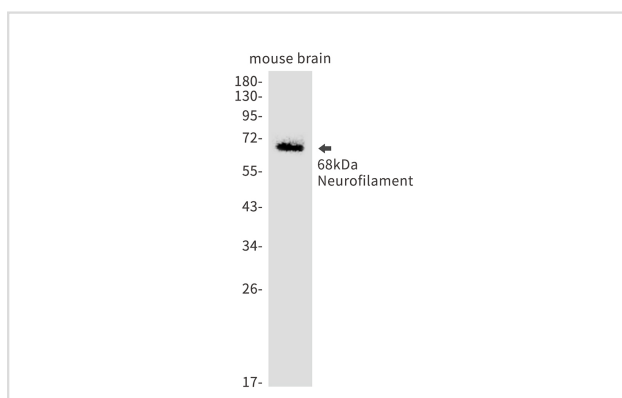
## Description

Product Name	Neurofilament light polypeptide Rabbit mAb
Host Species	Rabbit
Clonality	Monoclonal
Isotype	Rabbit IgG
Applications	WB IHC IP
Species Reactivity	Mouse
Immunogen Description	Recombinant protein of mouse 68kDa Neurofilament
Other Names	NFL; NF-L; NF68; CMT1F; CMT2E; CMTDIG; PPP1R110
Accession No.	Swiss-Prot:P08551 Gene ID:18039
Uniprot	P08551
GeneID	18039;
Calculated MW	62 kDa
SDS-PAGE MW	68 kDa
Formulation	50mM Tris-Glycine(pH 7.4), 0.15M NaCl, 40% Glycerol, 0.01% Sodium azide and 0.05% BSA
Storage	Store at 4°C short term. Aliquot and store at -20°C long term. Avoid freeze/thaw cycles.

## Application Details

IP: 1/20WB: 1/500-1/1000IHC: 1/50-1/100

## Images



Western blot analysis of 68kDa Neurofilament in mouse brain lysates using Neurofilament light polypeptide antibody.

Note: This product is for in vitro research use only