

## ALAS2 Rabbit mAb

Catalog No: #57216

Package Size: #57216-1 50ul #57216-2 100ul

Orders: [order@signalwayantibody.com](mailto:order@signalwayantibody.com)Support: [tech@signalwayantibody.com](mailto:tech@signalwayantibody.com)

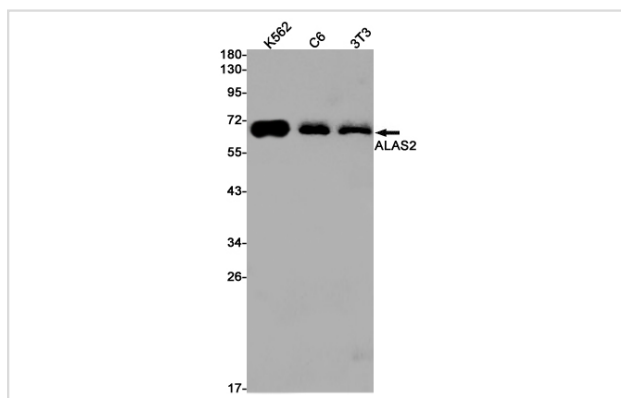
## Description

|                       |  |
|-----------------------|--|
| Product Name          | ALAS2 Rabbit mAb   |
| Host Species          | Rabbit   |
| Clonality             | Monoclonal   |
| Isotype               | Rabbit IgG   |
| Applications          | WB IP  |
| Species Reactivity    | Human,Mouse,Rat  |
| Immunogen Description | A synthetic peptide of human ALAS2   |
| Other Names           | ASB; ANH1; XLSA; ALASE; XLDPP; XLEPP; ALAS-E; SIDBA1                                     |
| Accession No.         | Swiss-Prot:P22557 Gene ID:212  |
| Uniprot               | P22557   |
| GeneID                | 212;   |
| Calculated MW         | 65 kDa   |
| SDS-PAGE MW           | 65 kDa   |
| Formulation           | 50mM Tris-Glycine(pH 7.4), 0.15M NaCl, 40% Glycerol, 0.01% Sodium azide and 0.05% BSA    |
| Storage               | Store at 4°C short term. Aliquot and store at -20°C long term. Avoid freeze/thaw cycles. |

## Application Details

IP:1/20WB: 1/500-1/1000

## Images



Western blot analysis of ALAS2 in K562, C6, 3T3 lysates using ALAS2 antibody.

Note: This product is for in vitro research use only