

Annexin A1 Rabbit mAb

Catalog No: #57220

Package Size: #57220-1 50ul #57220-2 100ul

Orders: order@signalwayantibody.com

Support: tech@signalwayantibody.com

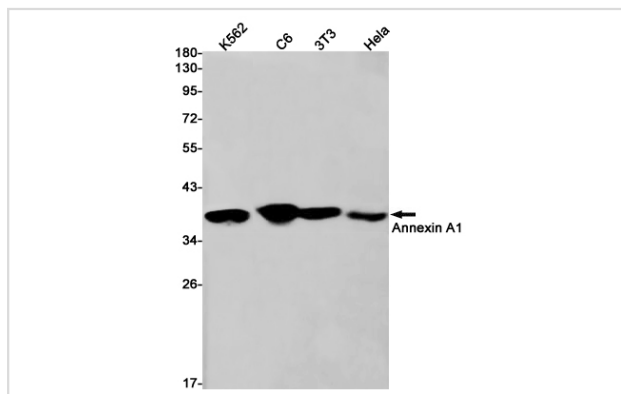
Description

Product Name	Annexin A1 Rabbit mAb
Host Species	Rabbit
Clonality	Monoclonal
Isotype	Rabbit IgG
Applications	WB IHC IP ICC
Species Reactivity	Human,Mouse,Rat
Immunogen Description	Recombinant protein of human Annexin A1
Other Names	ANXA1; ANX1; LPC1; Annexin A1; Annexin I; Annexin-1; Calpactin II; Calpactin-2; Chromobindin-9; Lipocortin I; Phospholipase A2 inhibitory protein; p35
Accession No.	Swiss-Prot:P04083 Gene ID:301
Uniprot	P04083
GeneID	301;
Calculated MW	39 kDa
SDS-PAGE MW	39 kDa
Formulation	50mM Tris-Glycine(pH 7.4), 0.15M NaCl, 40% Glycerol, 0.01% Sodium azide and 0.05% BSA
Storage	Store at 4°C short term. Aliquot and store at -20°C long term. Avoid freeze/thaw cycles.

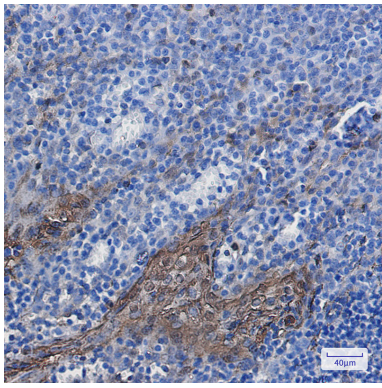
Application Details

IP:1/20WB: 1/500-1/1000IHC: 1/50-1/100ICC: 1/50-1/200

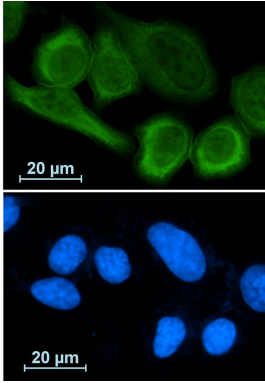
Images



Western blot analysis of Annexin A1 in K562, C6, 3T3, HeLa lysates using Annexin A1 antibody.



Immunohistochemistry analysis of paraffin-embedded Human tonsil using Annexin A1 antibody. High-pressure and temperature Sodium Citrate pH 6.0 was used for antigen retrieval.



Immunocytochemistry analysis of Annexin A1 (green) in A549 using Annexin A1 antibody, and DAPI (blue).

Note: This product is for in vitro research use only