

## Aquaporin 2 Rabbit mAb

Catalog No: #57222

Package Size: #57222-1 50ul #57222-2 100ul

Orders: order@signalwayantibody.com

Support: tech@signalwayantibody.com

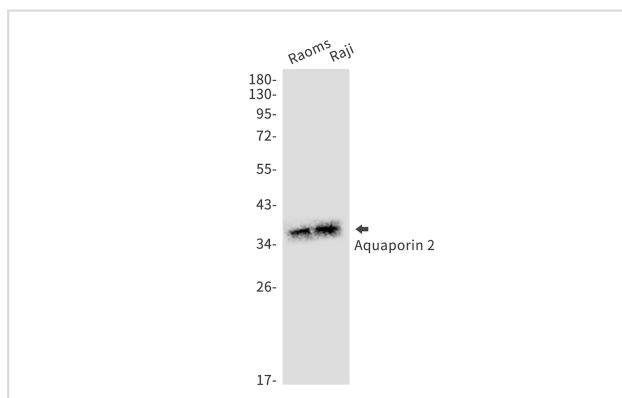
## Description

Product Name	Aquaporin 2 Rabbit mAb
Host Species	Rabbit
Clonality	Monoclonal
Isotype	Rabbit IgG
Applications	WB IHC IP
Species Reactivity	Human
Immunogen Description	A synthetic peptide of human Aquaporin 2
Other Names	AQP-CD; WCH-CD
Accession No.	Swiss-Prot:P41181 Gene ID:359
Uniprot	P41181
GeneID	359;
Calculated MW	29 kDa
SDS-PAGE MW	37 kDa
Formulation	50mM Tris-Glycine(pH 7.4), 0.15M NaCl, 40% Glycerol, 0.01% Sodium azide and 0.05% BSA
Storage	Store at 4°C short term. Aliquot and store at -20°C long term. Avoid freeze/thaw cycles.

## Application Details

IP: 1/20WB: 1/500-1/1000IHC: 1/50-1/100

## Images



Western blot analysis of Aquaporin 2 in Raoms, Raji lysates using Aquaporin 2 antibody.

Note: This product is for in vitro research use only