

Artemin Rabbit mAb

Catalog No: #57223

Package Size: #57223-1 50ul #57223-2 100ul

Orders: order@signalwayantibody.com

Support: tech@signalwayantibody.com

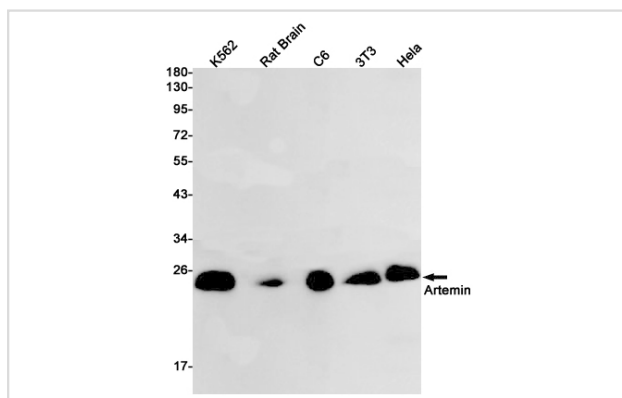
Description

Product Name	Artemin Rabbit mAb
Host Species	Rabbit
Clonality	Monoclonal
Isotype	Rabbit IgG
Applications	WB IHC IP
Species Reactivity	Human,Mouse,Rat
Immunogen Description	A synthetic peptide of human Artemin
Other Names	Enovin; Neublastin
Accession No.	Swiss-Prot:Q5T4W7 Gene ID:9048
Uniprot	Q5T4W7
GeneID	9048;
Calculated MW	23 kDa
SDS-PAGE MW	23 kDa
Formulation	50mM Tris-Glycine(pH 7.4), 0.15M NaCl, 40% Glycerol, 0.01% Sodium azide and 0.05% BSA
Storage	Store at 4°C short term. Aliquot and store at -20°C long term. Avoid freeze/thaw cycles.

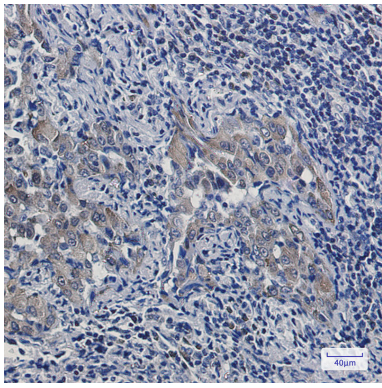
Application Details

IP: 1/20WB: 1/500-1/1000IHC: 1/50-1/100

Images



Western blot analysis of Artemin in K562, rat Brain, C6, 3T3, HeLa lysates using Artemin antibody.



Immunohistochemistry analysis of paraffin-embedded Human lung cancer using Artemin antibody. High-pressure and temperature Sodium Citrate pH 6.0 was used for antigen retrieval.

Note: This product is for in vitro research use only