

## ATP5G Rabbit mAb

Catalog No: #57225

Package Size: #57225-1 50ul #57225-2 100ul

Orders: order@signalwayantibody.com

Support: tech@signalwayantibody.com

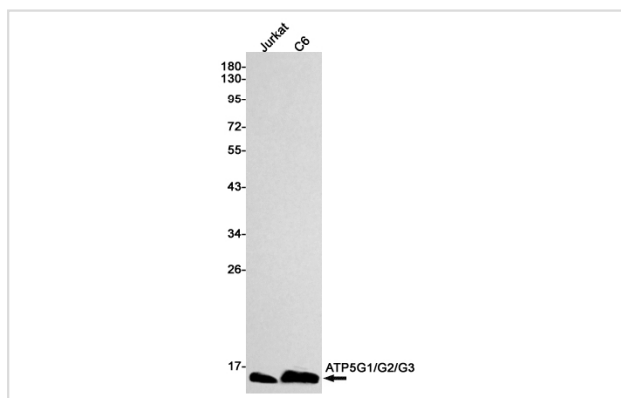
## Description

Product Name	ATP5G Rabbit mAb
Host Species	Rabbit
Clonality	Monoclonal
Isotype	Rabbit IgG
Applications	WB IHC IP
Species Reactivity	Human,Rat
Immunogen Description	A synthetic peptide of human ATP5G1/G2/G3
Other Names	ATP synthase lipid-binding protein; ATP synthase membrane subunit c locus 1
Accession No.	Swiss-Prot:P05496/Q06055/P48201 Gene ID:516/517/518
Uniprot	P05496/Q06055/P48201
GeneID	516/517/518;
Calculated MW	14 kDa
SDS-PAGE MW	14 kDa
Formulation	50mM Tris-Glycine(pH 7.4), 0.15M NaCl, 40% Glycerol, 0.01% Sodium azide and 0.05% BSA
Storage	Store at 4°C short term. Aliquot and store at -20°C long term. Avoid freeze/thaw cycles.

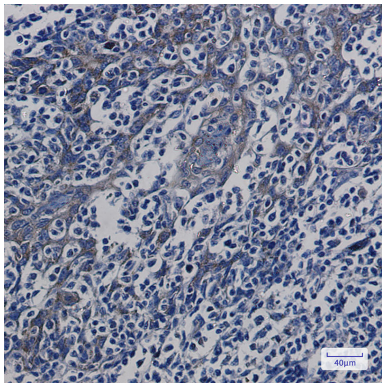
## Application Details

IP: 1/20WB: 1/500-1/1000IHC: 1/50-1/100

## Images



Western blot analysis of ATP5G1/G2/G3 in Jurkat, C6 lysates using ATP5G antibody.



Immunohistochemistry analysis of paraffin-embedded Human tonsil using ATP5G1/G2/G3 antibody. High-pressure and temperature Sodium Citrate pH 6.0 was used for antigen retrieval.

---

Note: This product is for in vitro research use only