

ATP6V0D1 Rabbit mAb

Catalog No: #57226

Package Size: #57226-1 50ul #57226-2 100ul

Orders: order@signalwayantibody.com

Support: tech@signalwayantibody.com

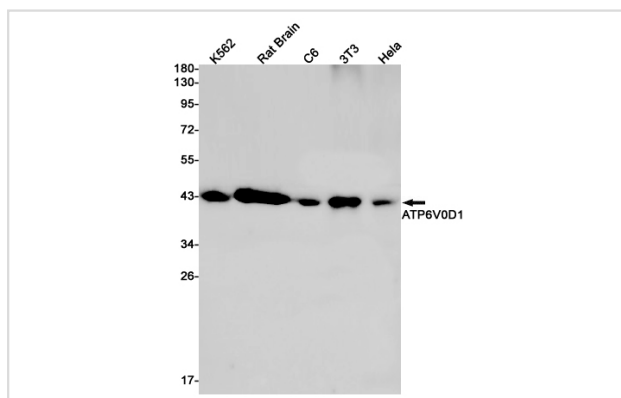
Description

Product Name	ATP6V0D1 Rabbit mAb
Host Species	Rabbit
Clonality	Monoclonal
Isotype	Rabbit IgG
Applications	WB IHC IP ICC
Species Reactivity	Human,Mouse,Rat
Immunogen Description	Recombinant protein of human ATP6V0D1
Other Names	P39; VATX; VMA6; ATP6D; ATP6DV; VPATPD
Accession No.	Swiss-Prot:P61421 Gene ID:9114
Uniprot	P61421
GeneID	9114;
Calculated MW	40 kDa
SDS-PAGE MW	40 kDa
Formulation	50mM Tris-Glycine(pH 7.4), 0.15M NaCl, 40% Glycerol, 0.01% Sodium azide and 0.05% BSA
Storage	Store at 4°C short term. Aliquot and store at -20°C long term. Avoid freeze/thaw cycles.

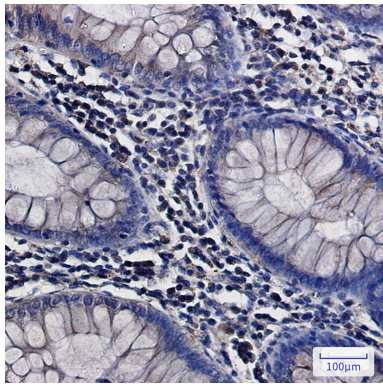
Application Details

IP: 1/20WB: 1/500-1/1000IHC: 1/50-1/100ICC: 1/50-1/200

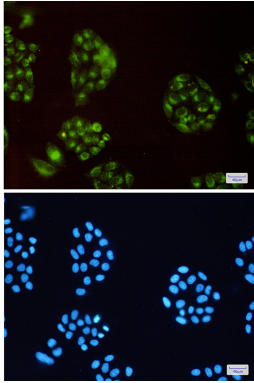
Images



Western blot analysis of ATP6V0D1 in K562, rat Brain, C6, 3T3, HeLa lysates using ATP6V0D1 antibody.



Immunohistochemistry analysis of paraffin-embedded Human colon cancer using ATP6V0D1 antibody. High-pressure and temperature Sodium Citrate pH 6.0 was used for antigen retrieval.



Immunocytochemistry analysis of ATP6V0D1(green) in HeLa using ATP6V0D1 antibody, and DAPI(blue)

Note: This product is for in vitro research use only