

beta IV Tubulin Rabbit mAb

Catalog No: #57228

Package Size: #57228-1 50ul #57228-2 100ul

Orders: order@signalwayantibody.com

Support: tech@signalwayantibody.com

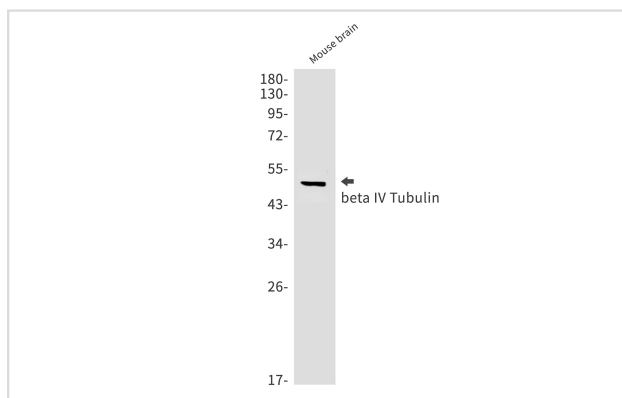
Description

Product Name	beta IV Tubulin Rabbit mAb
Host Species	Rabbit
Clonality	Monoclonal
Isotype	Rabbit IgG
Applications	WB IHC ICC
Species Reactivity	Human,Mouse,Rat
Immunogen Description	A synthetic peptide of human beta IV Tubulin
Other Names	DYT4; TUBB4; beta-5
Accession No.	Swiss-Prot:P04350 Gene ID:10382
Uniprot	P04350
GeneID	10382;
Calculated MW	50 kDa
SDS-PAGE MW	50 kDa
Formulation	50mM Tris-Glycine(pH 7.4), 0.15M NaCl, 40% Glycerol, 0.01% Sodium azide and 0.05% BSA
Storage	Store at 4°C short term. Aliquot and store at -20°C long term. Avoid freeze/thaw cycles.

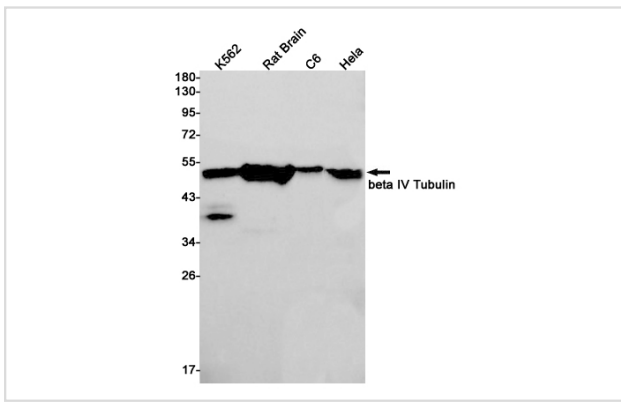
Application Details

WB: 1/500-1/1000IHC: 1/50-1/100ICC: 1/50-1/200

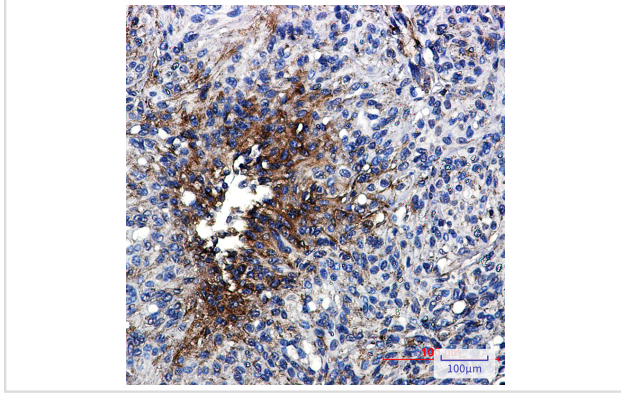
Images



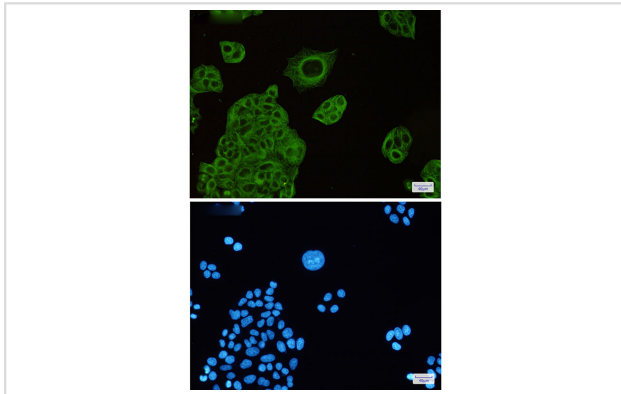
Western blot analysis of beta IV Tubulin in mouse brain lysates using beta IV Tubulin antibody.



Western blot analysis of beta IV Tubulin in K562, rat Brain, C6, HeLa lysates using beta IV Tubulin antibody.



Immunohistochemistry analysis of paraffin-embedded Human brain using beta IV Tubulin antibody. High-pressure and temperature Sodium Citrate pH 6.0 was used for antigen retrieval.



Immunocytochemistry analysis of beta IV Tubulin (green) in HeLa using beta IV Tubulin antibody, and DAPI (blue)

Note: This product is for in vitro research use only