

## BTF3 Rabbit mAb

Catalog No: #57231

Package Size: #57231-1 50ul #57231-2 100ul

Orders: [order@signalwayantibody.com](mailto:order@signalwayantibody.com)Support: [tech@signalwayantibody.com](mailto:tech@signalwayantibody.com)

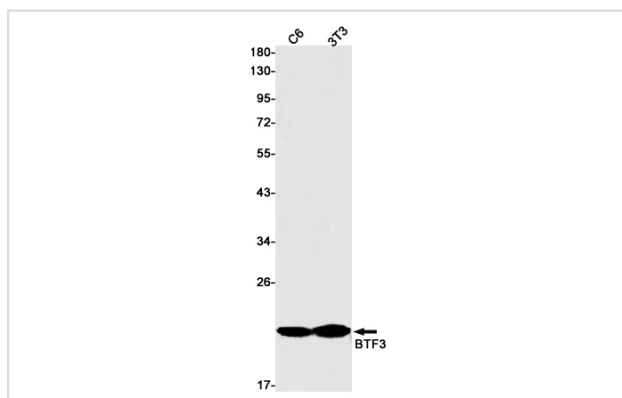
## Description

Product Name	BTF3 Rabbit mAb
Host Species	Rabbit
Clonality	Monoclonal
Isotype	Rabbit IgG
Applications	WB IHC IP
Species Reactivity	Human,Mouse,Rat
Immunogen Description	Recombinant protein of human BTF3
Other Names	NACB; BTF3a; BTF3b; BETA-NAC
Accession No.	Swiss-Prot:P20290 Gene ID:689
Uniprot	P20290
GeneID	689;
Calculated MW	22 kDa
SDS-PAGE MW	22 kDa
Formulation	50mM Tris-Glycine(pH 7.4), 0.15M NaCl, 40% Glycerol, 0.01% Sodium azide and 0.05% BSA
Storage	Store at 4°C short term. Aliquot and store at -20°C long term. Avoid freeze/thaw cycles.

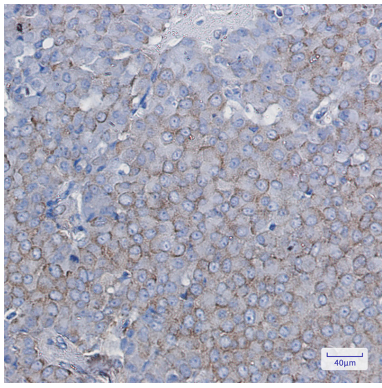
## Application Details

IP: 1/20WB: 1/500-1/1000IHC: 1/50-1/100

## Images



Western blot analysis of BTF3 in C6, 3T3 lysates using BTF3 antibody.



Immunohistochemistry analysis of paraffin-embedded Human breast cancer using BTF3 antibody. High-pressure and temperature Sodium Citrate pH 6.0 was used for antigen retrieval.

---

Note: This product is for in vitro research use only