

cAMP Protein Kinase Catalytic Subunit Rabbit mAb

Catalog No: #57233

Package Size: #57233-1 50ul #57233-2 100ul

Orders: order@signalwayantibody.com

Support: tech@signalwayantibody.com

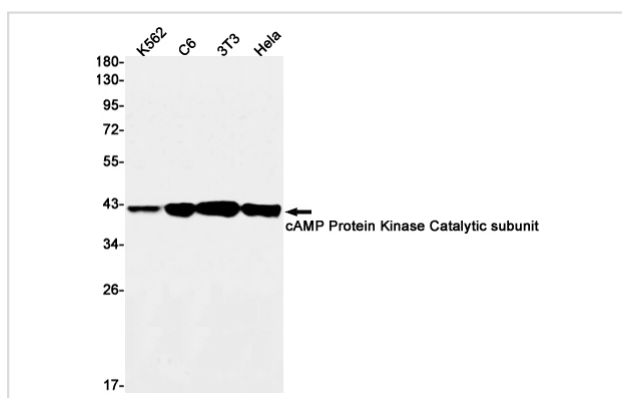
Description

Product Name	cAMP Protein Kinase Catalytic Subunit Rabbit mAb
Host Species	Rabbit
Clonality	Monoclonal
Isotype	Rabbit IgG
Applications	WB IHC IP ICC
Species Reactivity	Human,Mouse,Rat
Immunogen Description	A synthetic peptide of human cAMP Protein Kinase Catalytic subunit
Other Names	PKACA; PPNAD4
Accession No.	Swiss-Prot:P17612 Gene ID:5566
Uniprot	P17612
GeneID	5566;
Calculated MW	41 kDa
SDS-PAGE MW	41 kDa
Formulation	50mM Tris-Glycine(pH 7.4), 0.15M NaCl, 40% Glycerol, 0.01% Sodium azide and 0.05% BSA
Storage	Store at 4°C short term. Aliquot and store at -20°C long term. Avoid freeze/thaw cycles.

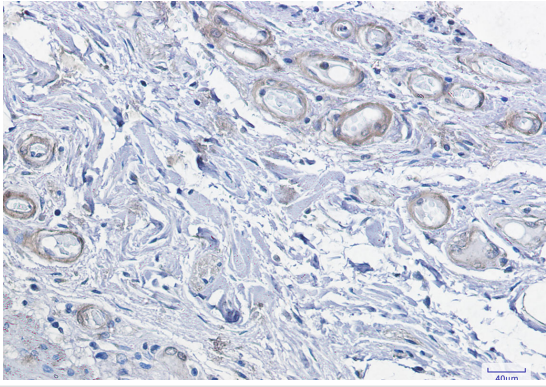
Application Details

IP:1/20WB: 1/500-1/1000IHC: 1/50-1/100ICC: 1/50-1/200

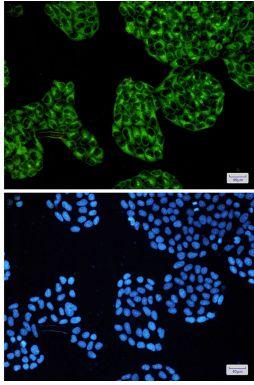
Images



Western blot analysis of cAMP Protein Kinase Catalytic subunit in K562, C6, 3T3, HeLa lysates using cAMP Protein Kinase Catalytic Subunit antibody.



Immunohistochemistry analysis of paraffin-embedded Human colon cancer using cAMP Protein Kinase Catalytic subunit antibody. High-pressure and temperature Sodium Citrate pH 6.0 was used for antigen retrieval.



Immunocytochemistry analysis of cAMP Protein Kinase Catalytic subunit (green) in HeLa using cAMP Protein Kinase Catalytic subunit antibody, and DAPI (blue)

Note: This product is for in vitro research use only