

## CD226 Rabbit mAb

Catalog No: #57238

Package Size: #57238-1 50ul #57238-2 100ul

Orders: order@signalwayantibody.com

Support: tech@signalwayantibody.com

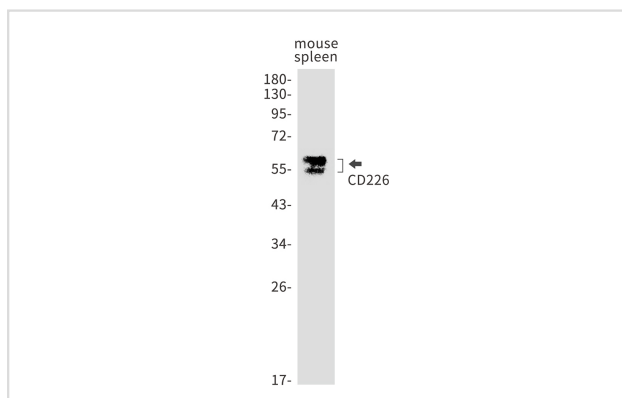
## Description

Product Name	CD226 Rabbit mAb
Host Species	Rabbit
Clonality	Monoclonal
Isotype	Rabbit IgG
Applications	WB IHC IP ICC
Species Reactivity	Mouse
Immunogen Description	Recombinant protein of mouse CD226
Other Names	Platelet and T-cell activation antigen 1; CD226
Accession No.	Swiss-Prot:Q8K4F0 Gene ID:225825
Uniprot	Q8K4F0
GeneID	225825;
Calculated MW	38 kDa
SDS-PAGE MW	55-65 kDa
Formulation	50mM Tris-Glycine(pH 7.4), 0.15M NaCl, 40% Glycerol, 0.01% Sodium azide and 0.05% BSA
Storage	Store at 4°C short term. Aliquot and store at -20°C long term. Avoid freeze/thaw cycles.

## Application Details

IP: 1/20WB: 1/500-1/1000IHC: 1/50-1/100ICC: 1/50-1/200

## Images



Western blot analysis of CD226 in mouse spleen lysates using CD226 antibody.

Note: This product is for in vitro research use only