

CD272 Rabbit mAb

Catalog No: #57239

Package Size: #57239-1 50ul #57239-2 100ul

Orders: order@signalwayantibody.com

Support: tech@signalwayantibody.com

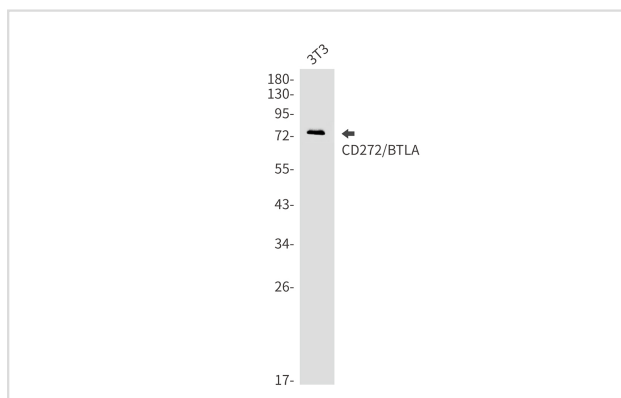
Description

Product Name	CD272 Rabbit mAb
Host Species	Rabbit
Clonality	Monoclonal
Isotype	Rabbit IgG
Applications	WB IHC IP
Species Reactivity	Human,Mouse
Immunogen Description	Recombinant protein of mouse CD272
Other Names	A630002H24; B-and T-lymphocyte-associated protein
Accession No.	Swiss-Prot:Q7TSA3 Gene ID:208154
Uniprot	Q7TSA3
GeneID	208154;
Calculated MW	34 kDa
SDS-PAGE MW	55-80 kDa
Formulation	50mM Tris-Glycine(pH 7.4), 0.15M NaCl, 40% Glycerol, 0.01% Sodium azide and 0.05% BSA
Storage	Store at 4°C short term. Aliquot and store at -20°C long term. Avoid freeze/thaw cycles.

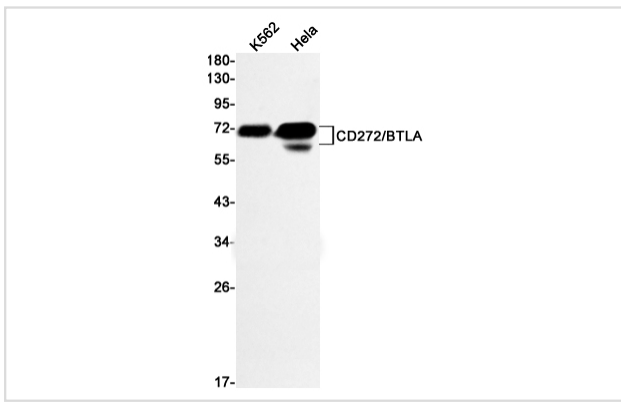
Application Details

IP: 1/20WB: 1/500-1/1000IHC: 1/50-1/100

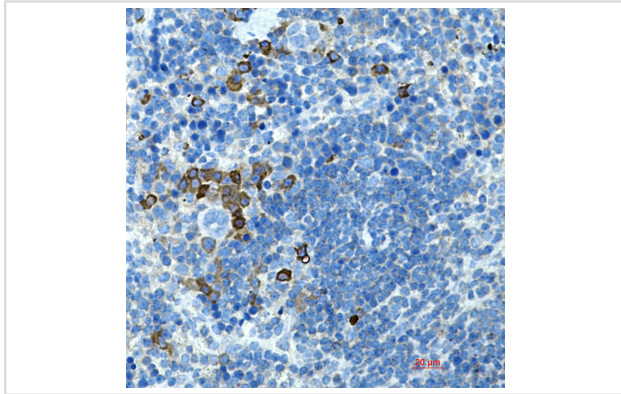
Images



Western blot analysis of CD272/BTLA in 3T3 lysates using CD272/BTLA antibody.



Western blot analysis of CD272/BTLA in K562, HeLa lysates using CD272/BTLA antibody



Immunohistochemistry analysis of paraffin-embedded mouse spleen using CD272 antibody. High-pressure and temperature Sodium Citrate pH 6.0 was used for antigen retrieval.

Note: This product is for in vitro research use only