

Claudin 3 Rabbit mAb

Catalog No: #57244

Package Size: #57244-1 50ul #57244-2 100ul

Orders: order@signalwayantibody.comSupport: tech@signalwayantibody.com

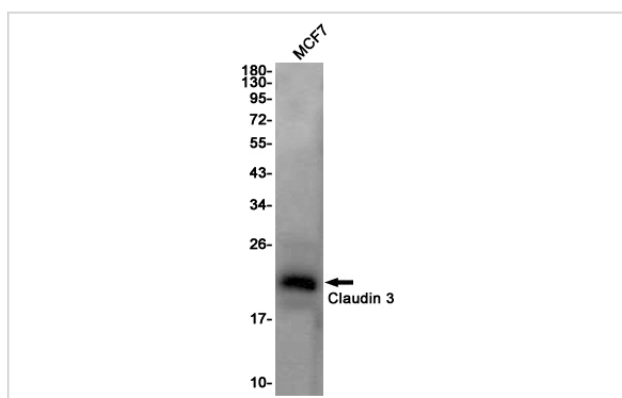
Description

Product Name	Claudin 3 Rabbit mAb
Host Species	Rabbit
Clonality	Monoclonal
Isotype	Rabbit IgG
Applications	WB IP ICC
Species Reactivity	Human
Immunogen Description	A synthetic peptide of human Claudin 3
Other Names	RVP1; HRVP1; C7orf1; CPE-R2; CPETR2
Accession No.	Swiss-Prot:O15551 Gene ID:1365
Uniprot	O15551
GeneID	1365;
Calculated MW	23 kDa
SDS-PAGE MW	20 kDa
Formulation	50mM Tris-Glycine(pH 7.4), 0.15M NaCl, 40% Glycerol, 0.01% Sodium azide and 0.05% BSA
Storage	Store at 4°C short term. Aliquot and store at -20°C long term. Avoid freeze/thaw cycles.

Application Details

IP: 1/20WB: 1/500-1/1000ICC: 1/50-1/200

Images



Western blot analysis of Claudin 3 in MCF-7 lysates using Claudin 3 antibody.

Note: This product is for in vitro research use only