

CPSF6 Rabbit mAb

Catalog No: #57248

Package Size: #57248-1 50ul #57248-2 100ul

Orders: order@signalwayantibody.com

Support: tech@signalwayantibody.com

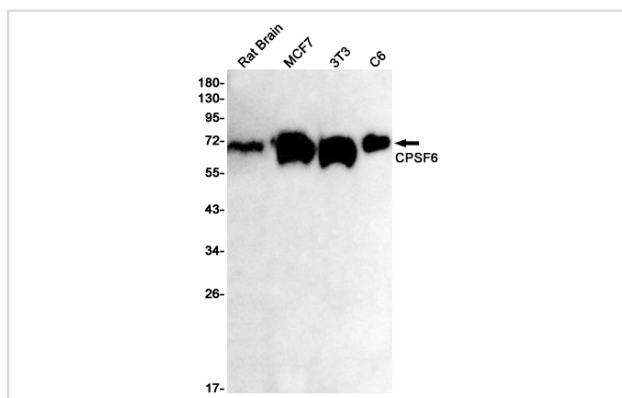
Description

Product Name	CPSF6 Rabbit mAb
Host Species	Rabbit
Clonality	Monoclonal
Isotype	Rabbit IgG
Applications	WB IHC IP ICC
Species Reactivity	Human,Mouse,Rat
Immunogen Description	A synthetic peptide of human CPSF6
Other Names	CFIM; CFIM68; CFIM72; HPBR11-4; HPBR11-7
Accession No.	Swiss-Prot:Q16630 Gene ID:11052
Uniprot	Q16630
GeneID	11052;
Calculated MW	59 kDa
SDS-PAGE MW	70 kDa
Formulation	50mM Tris-Glycine(pH 7.4), 0.15M NaCl, 40% Glycerol, 0.01% Sodium azide and 0.05% BSA
Storage	Store at 4°C short term. Aliquot and store at -20°C long term. Avoid freeze/thaw cycles.

Application Details

IP: 1/20WB: 1/500-1/1000IHC: 1/50-1/100ICC: 1/50-1/200

Images



Western blot analysis of CPSF6 in rat Brain, MCF-7, 3T3, C6 lysates using CPSF6 antibody.

Note: This product is for in vitro research use only