

Cyclin A2 Rabbit mAb

Catalog No: #57249

Package Size: #57249-1 50ul #57249-2 100ul

Orders: order@signalwayantibody.com

Support: tech@signalwayantibody.com

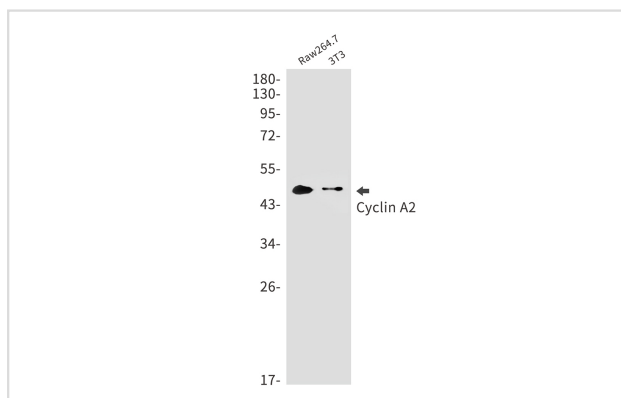
Description

Product Name	Cyclin A2 Rabbit mAb
Host Species	Rabbit
Clonality	Monoclonal
Isotype	Rabbit IgG
Applications	WB IHC ICC
Species Reactivity	Human,Mouse,Rat
Immunogen Description	Recombinant protein of mouse Cyclin A2
Other Names	Ccn1; Ccna; Cyca; Ccn-1; CycA2; AA408589
Accession No.	Swiss-Prot:P51943 Gene ID:12428
Uniprot	P51943
GeneID	12428;
Calculated MW	47 kDa
SDS-PAGE MW	47 kDa
Formulation	50mM Tris-Glycine(pH 7.4), 0.15M NaCl, 40% Glycerol, 0.01% Sodium azide and 0.05% BSA
Storage	Store at 4°C short term. Aliquot and store at -20°C long term. Avoid freeze/thaw cycles.

Application Details

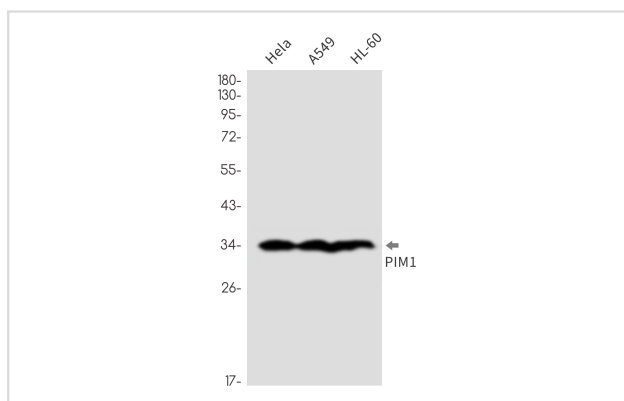
WB: 1/500-1/1000IHC: 1/50-1/100ICC: 1/50-1/200

Images



Western blot analysis of Cyclin A2 in Raw264.7, 3T3 lysates using Cyclin A2 antibody.

Western blot analysis of Cyclin A2 in Jurkat, C6, A431 lysates using Cyclin A2 antibody.



Note: This product is for in vitro research use only