

Cyclin T1 Rabbit mAb

Catalog No: #57250

Package Size: #57250-1 50ul #57250-2 100ul

Orders: order@signalwayantibody.com

Support: tech@signalwayantibody.com

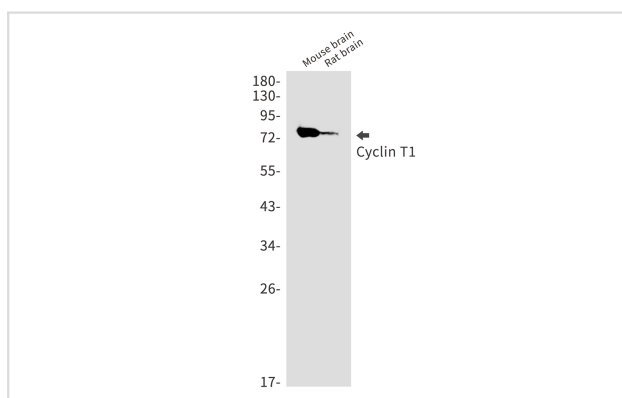
Description

Product Name	Cyclin T1 Rabbit mAb
Host Species	Rabbit
Clonality	Monoclonal
Isotype	Rabbit IgG
Applications	WB IHC IP ICC
Species Reactivity	Human,Mouse,Rat
Immunogen Description	Recombinant protein of human Cyclin T1
Other Names	CCNT; CYCT1; HIVE1
Accession No.	Swiss-Prot:O60563 Gene ID:904
Uniprot	O60563
GeneID	904;
Calculated MW	81 kDa
SDS-PAGE MW	81 kDa
Formulation	50mM Tris-Glycine(pH 7.4), 0.15M NaCl, 40% Glycerol, 0.01% Sodium azide and 0.05% BSA
Storage	Store at 4°C short term. Aliquot and store at -20°C long term. Avoid freeze/thaw cycles.

Application Details

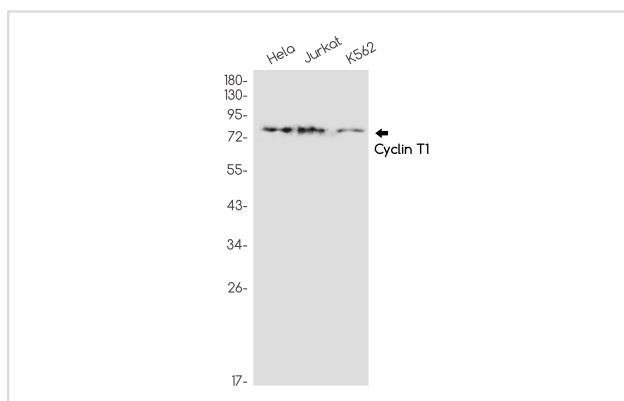
IP:1/20WB: 1/500-1/1000IHC: 1/50-1/100ICC: 1/50-1/200

Images



Western blot analysis of Cyclin T1 in mouse brain, rat brain lysates using Cyclin T1 antibody.

Western blot analysis of Cyclin T1 in HeLa, Jurkat, K562 lysates using Cyclin T1 antibody.



Note: This product is for in vitro research use only