

## DCI Rabbit mAb

Catalog No: #57254

Package Size: #57254-1 50ul #57254-2 100ul

Orders: order@signalwayantibody.com

Support: tech@signalwayantibody.com

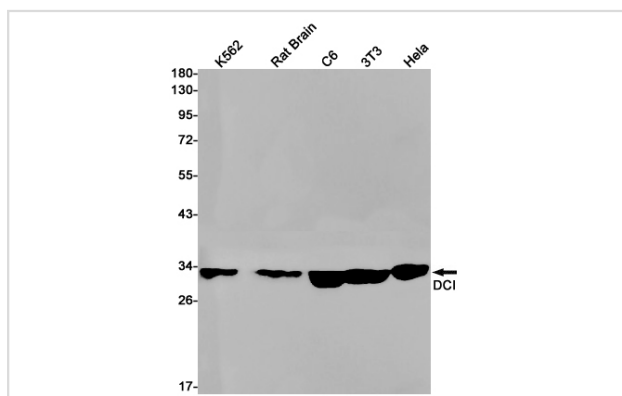
## Description

Product Name	DCI Rabbit mAb
Host Species	Rabbit
Clonality	Monoclonal
Isotype	Rabbit IgG
Applications	WB IHC ICC
Species Reactivity	Human,Mouse,Rat
Immunogen Description	A synthetic peptide of human DCI
Other Names	EC11; DCI; Enoyl-CoA delta isomerase 1; mitochondrial; 3; 2-trans-enoyl-CoA isomerase; Delta(3); Delta(2)-enoyl-CoA isomerase; D3; D2-enoyl-CoA isomerase; Dodecenoyl-CoA isomerase
Accession No.	Swiss-Prot:P42126 Gene ID:1632
Uniprot	P42126
GeneID	1632;
Calculated MW	33 kDa
SDS-PAGE MW	33 kDa
Formulation	50mM Tris-Glycine(pH 7.4), 0.15M NaCl, 40% Glycerol, 0.01% Sodium azide and 0.05% BSA
Storage	Store at 4°C short term. Aliquot and store at -20°C long term. Avoid freeze/thaw cycles.

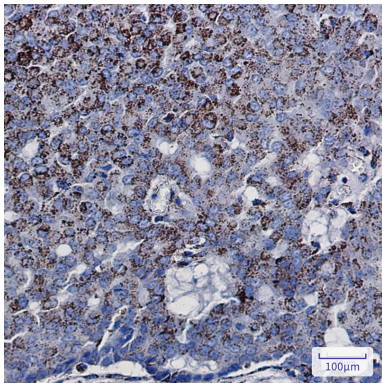
## Application Details

WB: 1/500-1/1000IHC: 1/50-1/100ICC: 1/50-1/200

## Images



Western blot analysis of DCI in K562, rat Brain, C6, 3T3, HeLa lysates using DCI antibody.



Immunohistochemistry analysis of paraffin-embedded Human breast cancer using DCI antibody. High-pressure and temperature Sodium Citrate pH 6.0 was used for antigen retrieval.

---

Note: This product is for in vitro research use only