

## DOHH Rabbit mAb

Catalog No: #57257

Package Size: #57257-1 50ul #57257-2 100ul

Orders: order@signalwayantibody.com

Support: tech@signalwayantibody.com

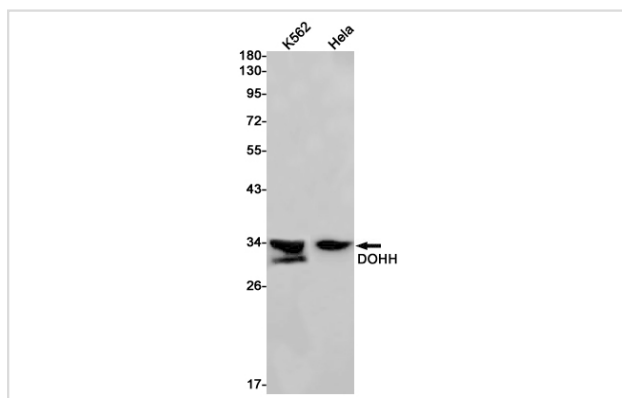
## Description

Product Name	DOHH Rabbit mAb
Host Species	Rabbit
Clonality	Monoclonal
Isotype	Rabbit IgG
Applications	WB IP
Species Reactivity	Human
Immunogen Description	A synthetic peptide of human DOHH
Other Names	HLRC1; hDOHH
Accession No.	Swiss-Prot:Q9BU89 Gene ID:83475
Uniprot	Q9BU89
GeneID	83475;
Calculated MW	33 kDa
SDS-PAGE MW	33 kDa
Formulation	50mM Tris-Glycine(pH 7.4), 0.15M NaCl, 40% Glycerol, 0.01% Sodium azide and 0.05% BSA
Storage	Store at 4°C short term. Aliquot and store at -20°C long term. Avoid freeze/thaw cycles.

## Application Details

IP:1/20WB: 1/500-1/1000

## Images



Western blot analysis of DOHH in K562, HeLa lysates using DOHH antibody.

Note: This product is for in vitro research use only