

## XPO4 Rabbit mAb

Catalog No: #57259

Package Size: #57259-1 50ul #57259-2 100ul

Orders: order@signalwayantibody.com

Support: tech@signalwayantibody.com

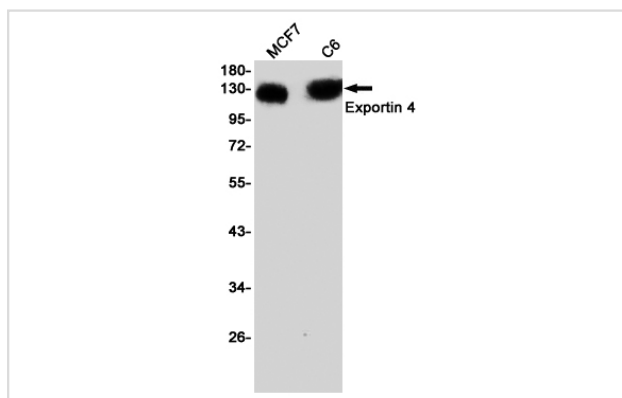
## Description

Product Name	XPO4 Rabbit mAb
Host Species	Rabbit
Clonality	Monoclonal
Isotype	Rabbit IgG
Applications	WB IP
Species Reactivity	Human,Rat
Immunogen Description	A synthetic peptide of human Exportin 4
Other Names	exp4
Accession No.	Swiss-Prot:Q9C0E2 Gene ID:64328
Uniprot	Q9C0E2
GeneID	64328;
Calculated MW	130 kDa
SDS-PAGE MW	130 kDa
Formulation	50mM Tris-Glycine(pH 7.4), 0.15M NaCl, 40% Glycerol, 0.01% Sodium azide and 0.05% BSA
Storage	Store at 4°C short term. Aliquot and store at -20°C long term. Avoid freeze/thaw cycles.

## Application Details

IP:1/20WB: 1/500-1/1000

## Images



Western blot analysis of Exportin 4 in MCF-7, C6 lysates using XPO4 antibody.

Note: This product is for in vitro research use only