

## KDM2A Rabbit mAb

Catalog No: #57261

Package Size: #57261-1 50ul #57261-2 100ul

Orders: order@signalwayantibody.com

Support: tech@signalwayantibody.com

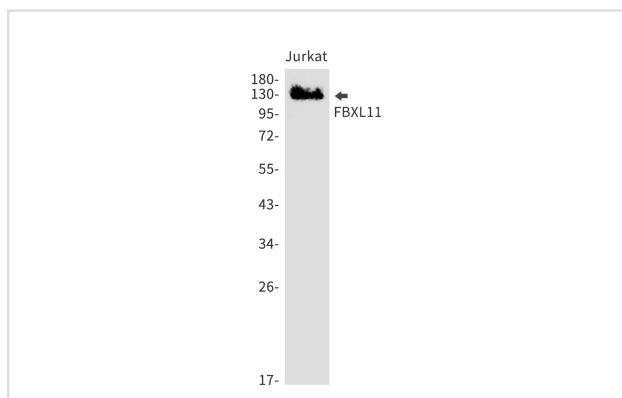
## Description

Product Name	KDM2A Rabbit mAb
Host Species	Rabbit
Clonality	Monoclonal
Isotype	Rabbit IgG
Applications	WB IHC IP ICC
Species Reactivity	Human
Immunogen Description	A synthetic peptide of human FBXL11
Other Names	FBL7; CXXC8; FBL11; FBXL11; JHDM1A; LILINA
Accession No.	Swiss-Prot:Q9Y2K7 Gene ID:22992
Uniprot	Q9Y2K7
GeneID	22992;
Calculated MW	133 kDa
SDS-PAGE MW	133 kDa
Formulation	50mM Tris-Glycine(pH 7.4), 0.15M NaCl, 40% Glycerol, 0.01% Sodium azide and 0.05% BSA
Storage	Store at 4°C short term. Aliquot and store at -20°C long term. Avoid freeze/thaw cycles.

## Application Details

IP: 1/20WB: 1/500-1/1000IHC: 1/50-1/100ICC: 1/50-1/200

## Images



Western blot analysis of FBXL11 in Jurkat lysates using KDM2A antibody.

Note: This product is for in vitro research use only