

GPD2 Rabbit mAb

Catalog No: #57268

Package Size: #57268-1 50ul #57268-2 100ul

Orders: order@signalwayantibody.com

Support: tech@signalwayantibody.com

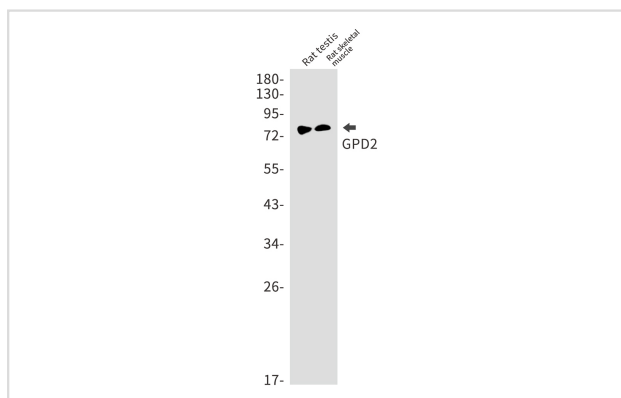
Description

| | |
|-----------------------|--|
| Product Name | GPD2 Rabbit mAb |
| Host Species | Rabbit |
| Clonality | Monoclonal |
| Isotype | Rabbit IgG |
| Applications | WB IP |
| Species Reactivity | Human,Mouse,Rat |
| Immunogen Description | A synthetic peptide of human GPD2 |
| Other Names | GDH2; GPDM; mGPDH |
| Accession No. | Swiss-Prot:P43304 Gene ID:2820 |
| Uniprot | P43304 |
| GeneID | 2820; |
| Calculated MW | 81 kDa |
| SDS-PAGE MW | 81 kDa |
| Formulation | 50mM Tris-Glycine(pH 7.4), 0.15M NaCl, 40% Glycerol, 0.01% Sodium azide and 0.05% BSA |
| Storage | Store at 4°C short term. Aliquot and store at -20°C long term. Avoid freeze/thaw cycles. |

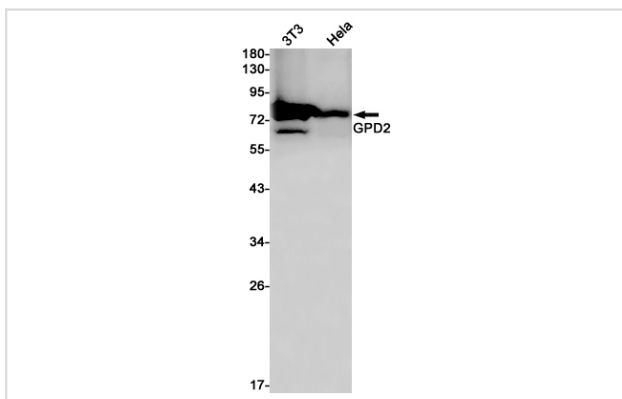
Application Details

IP:1/20WB: 1/500-1/1000

Images



Western blot analysis of GPD2 in rat testis, rat skeletal muscle lysates using GPD2 antibody.



Western blot analysis of GPD2 in K562, HeLa lysates using GPD2 antibody.

Note: This product is for in vitro research use only