

## Histone H1.3 Rabbit mAb

Catalog No: #57271

Package Size: #57271-1 50ul #57271-2 100ul

Orders: order@signalwayantibody.com

Support: tech@signalwayantibody.com

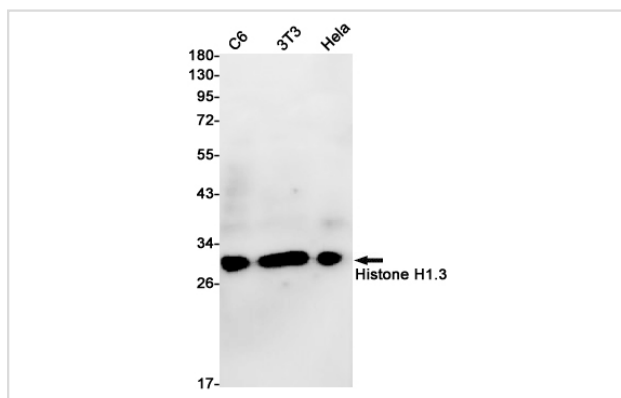
## Description

Product Name	Histone H1.3 Rabbit mAb
Host Species	Rabbit
Clonality	Monoclonal
Isotype	Rabbit IgG
Applications	WB IHC ICC
Species Reactivity	Human,Mouse,Rat
Immunogen Description	A synthetic peptide of human Histone H1.3
Other Names	Histone H1c; Histone H1s-2
Accession No.	Swiss-Prot:P16402 Gene ID:3007
Uniprot	P16402
GeneID	3007;
Calculated MW	22 kDa
SDS-PAGE MW	30 kDa
Formulation	50mM Tris-Glycine(pH 7.4), 0.15M NaCl, 40% Glycerol, 0.01% Sodium azide and 0.05% BSA
Storage	Store at 4°C short term. Aliquot and store at -20°C long term. Avoid freeze/thaw cycles.

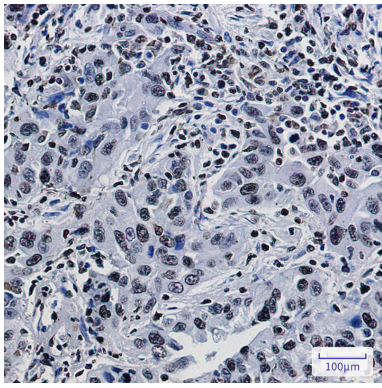
## Application Details

WB: 1/500-1/1000IHC: 1/50-1/100ICC: 1/50-1/200

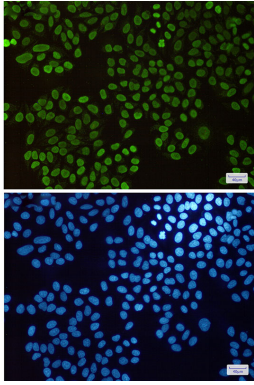
## Images



Western blot analysis of Histone H1.3 in C6, 3T3, HeLa lysates using Histone H1.3 antibody.



Immunohistochemistry analysis of paraffin-embedded Human lung cancer using Histone H1.3 antibody. High-pressure and temperature Sodium Citrate pH 6.0 was used for antigen retrieval.



Immunocytochemistry analysis of Histone H1.3(green) in HeLa using Histone H1.3 antibody, and DAPI(blue)

---

Note: This product is for in vitro research use only