

HP1 gamma Rabbit mAb

Catalog No: #57274

Package Size: #57274-1 50ul #57274-2 100ul

Orders: order@signalwayantibody.com

Support: tech@signalwayantibody.com

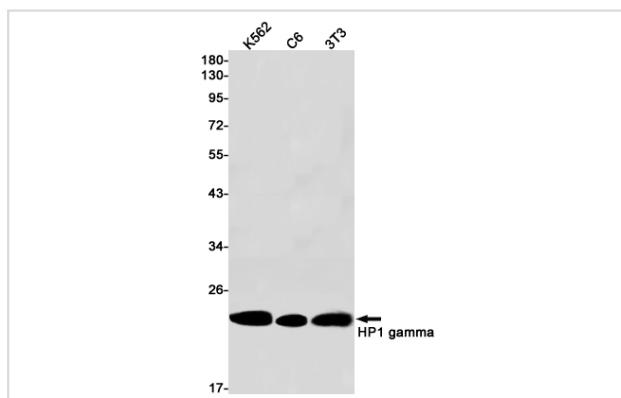
Description

Product Name	HP1 gamma Rabbit mAb
Host Species	Rabbit
Clonality	Monoclonal
Isotype	Rabbit IgG
Applications	WB IHC IP
Species Reactivity	Human,Mouse,Rat
Immunogen Description	A synthetic peptide of mouse HP1 gamma
Other Names	HECH; HP1-GAMMA; HP1Hs-gamma; CBX3
Accession No.	Swiss-Prot:P23198 Gene ID:12417
Uniprot	P23198
GeneID	12417;
Calculated MW	21 kDa
SDS-PAGE MW	21 kDa
Formulation	50mM Tris-Glycine(pH 7.4), 0.15M NaCl, 40% Glycerol, 0.01% Sodium azide and 0.05% BSA
Storage	Store at 4°C short term. Aliquot and store at -20°C long term. Avoid freeze/thaw cycles.

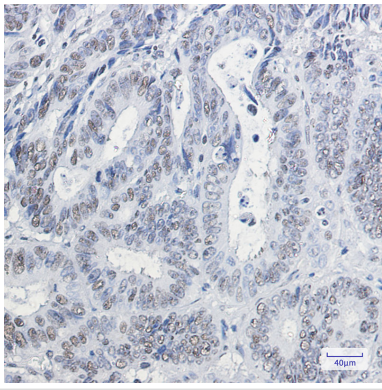
Application Details

IP:1/20WB: 1/500-1/1000IHC: 1/50-1/100

Images



Western blot analysis of HP1 gamma in K562, C6, 3T3 lysates using HP1 gamma antibody.



Immunohistochemistry analysis of paraffin-embedded Human colon cancer using HP1 gamma antibody. High-pressure and temperature Sodium Citrate pH 6.0 was used for antigen retrieval.

Note: This product is for in vitro research use only