

## HPDL Rabbit mAb

Catalog No: #57275

Package Size: #57275-1 50ul #57275-2 100ul

Orders: order@signalwayantibody.com

Support: tech@signalwayantibody.com

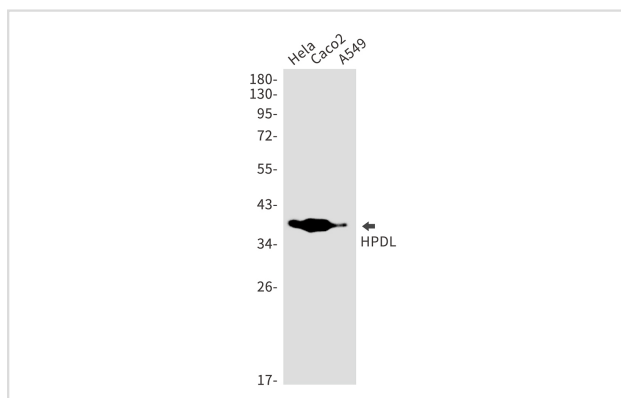
## Description

Product Name	HPDL Rabbit mAb
Host Species	Rabbit
Clonality	Monoclonal
Isotype	Rabbit IgG
Applications	WB IP
Species Reactivity	Human
Immunogen Description	A synthetic peptide of human HPDL
Other Names	4-hydroxyphenylpyruvate dioxygenase like; GLOXD1; 4-HPPD-L
Accession No.	Swiss-Prot:Q96IR7 Gene ID:84842
Uniprot	Q96IR7
GeneID	84842;
Calculated MW	39 kDa
SDS-PAGE MW	39 kDa
Formulation	50mM Tris-Glycine(pH 7.4), 0.15M NaCl, 40% Glycerol, 0.01% Sodium azide and 0.05% BSA
Storage	Store at 4°C short term. Aliquot and store at -20°C long term. Avoid freeze/thaw cycles.

## Application Details

IP:1/20WB: 1/500-1/1000

## Images



Western blot analysis of HPDL in HeLa, Caco2, A549 lysates using HPDL antibody.

Note: This product is for in vitro research use only