

IGF2BP1 Rabbit mAb

Catalog No: #57279

Package Size: #57279-1 50ul #57279-2 100ul

Orders: order@signalwayantibody.com

Support: tech@signalwayantibody.com

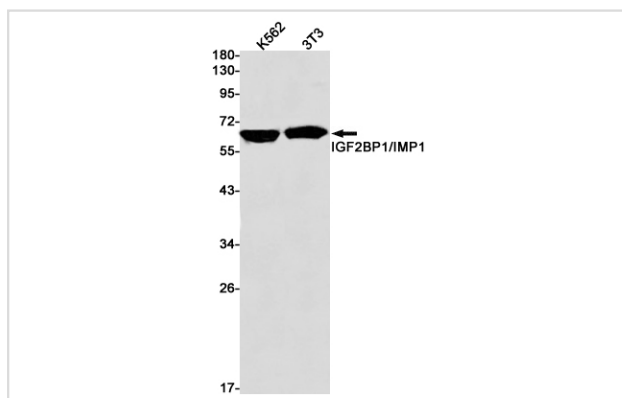
Description

Product Name	IGF2BP1 Rabbit mAb
Host Species	Rabbit
Clonality	Monoclonal
Isotype	Rabbit IgG
Applications	WB IHC IP
Species Reactivity	Human,Mouse
Immunogen Description	Recombinant protein of human IGF2BP1
Other Names	insulin-like growth factor 2 mRNA binding protein 1; IMP1; ZBP1; CRDBP; IMP-1; CRD-BP; VICKZ1
Accession No.	Swiss-Prot:Q9NZI8 Gene ID:10642
Uniprot	Q9NZI8
GeneID	10642;
Calculated MW	63 kDa
SDS-PAGE MW	63 kDa
Formulation	50mM Tris-Glycine(pH 7.4), 0.15M NaCl, 40% Glycerol, 0.01% Sodium azide and 0.05% BSA
Storage	Store at 4°C short term. Aliquot and store at -20°C long term. Avoid freeze/thaw cycles.

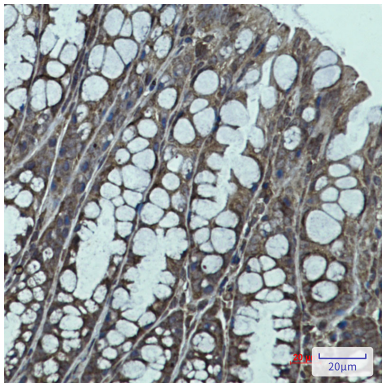
Application Details

IP:1/20WB: 1/500-1/1000IHC: 1/50-1/100

Images



Western blot analysis of IGF2BP1 in K562, 3T3 lysates using IGF2BP1 antibody.



Immunohistochemistry analysis of paraffin-embedded mouse colon using IGF2BP1 antibody. High-pressure and temperature Sodium Citrate pH 6.0 was used for antigen retrieval.

Note: This product is for in vitro research use only