

## Integrin beta 6 Rabbit mAb

Catalog No: #57281

Package Size: #57281-1 50ul #57281-2 100ul

Orders: order@signalwayantibody.com

Support: tech@signalwayantibody.com

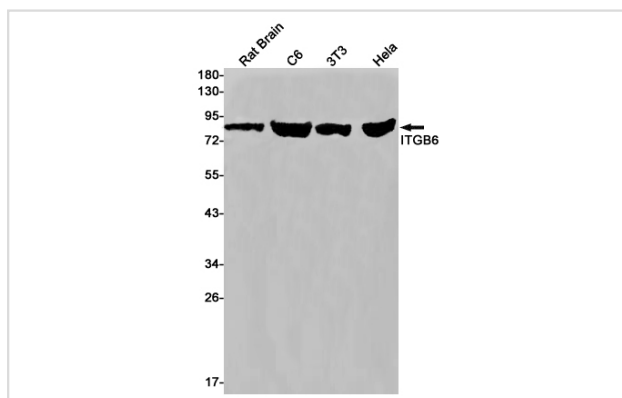
## Description

Product Name	Integrin beta 6 Rabbit mAb
Host Species	Rabbit
Clonality	Monoclonal
Isotype	Rabbit IgG
Applications	WB IP
Species Reactivity	Human,Mouse,Rat
Immunogen Description	A synthetic peptide of human ITGB6
Other Names	AI1H; Integrin beta-6
Accession No.	Swiss-Prot:P18564 Gene ID:3694
Uniprot	P18564
GeneID	3694;
Calculated MW	86 kDa
SDS-PAGE MW	86 kDa
Formulation	50mM Tris-Glycine(pH 7.4), 0.15M NaCl, 40% Glycerol, 0.01% Sodium azide and 0.05% BSA
Storage	Store at 4°C short term. Aliquot and store at -20°C long term. Avoid freeze/thaw cycles.

## Application Details

IP:1/20WB: 1/500-1/1000

## Images



Western blot analysis of ITGB6 in rat Brain, C6, 3T3, HeLa lysates using Integrin beta 6 antibody.

Note: This product is for in vitro research use only