

LYVE1 Rabbit mAb

Catalog No: #57285

Package Size: #57285-1 50ul #57285-2 100ul

Orders: order@signalwayantibody.comSupport: tech@signalwayantibody.com

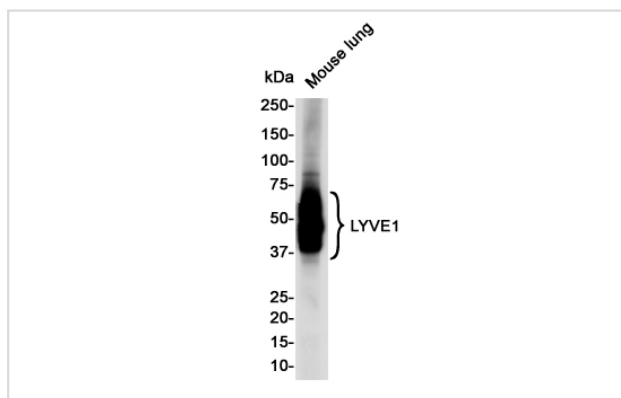
Description

Product Name	LYVE1 Rabbit mAb
Host Species	Rabbit
Clonality	Monoclonal
Isotype	Rabbit IgG
Applications	WB IHC IP
Species Reactivity	Human,Mouse
Immunogen Description	Recombinant protein of mouse LYVE1
Other Names	CRSBP-1; Extracellular link domain-containing protein 1
Accession No.	Swiss-Prot:Q8BHC0 Gene ID:114332
Uniprot	Q8BHC0
GeneID	114332;
Calculated MW	35 kDa
SDS-PAGE MW	35-70 kDa
Formulation	50mM Tris-Glycine(pH 7.4), 0.15M NaCl, 40% Glycerol, 0.01% Sodium azide and 0.05% BSA
Storage	Store at 4°C short term. Aliquot and store at -20°C long term. Avoid freeze/thaw cycles.

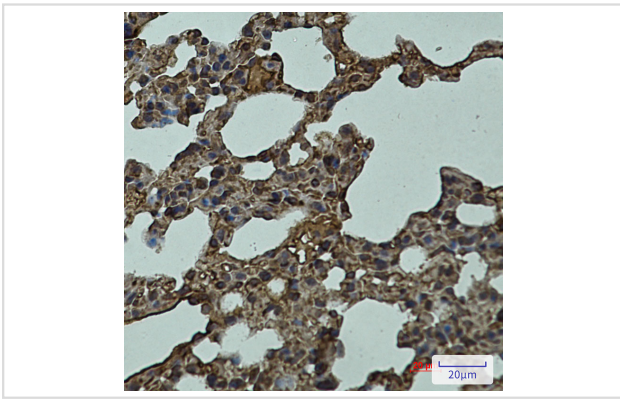
Application Details

IP:1/20WB: 1/500-1/1000IHC: 1/50-1/100

Images



Western blot analysis of LYVE1 in mouse Lung lysates using LYVE1 antibody.



Immunohistochemistry analysis of paraffin-embedded mouse lung using LYVE1 antibody. High-pressure and temperature Sodium Citrate pH 6.0 was used for antigen retrieval.

Note: This product is for in vitro research use only