

MAT1A Rabbit mAb

Catalog No: #57287

Package Size: #57287-1 50ul #57287-2 100ul

Orders: order@signalwayantibody.comSupport: tech@signalwayantibody.com

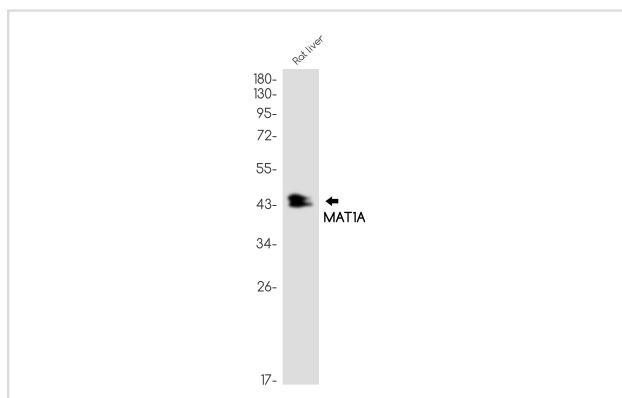
Description

Product Name	MAT1A Rabbit mAb
Host Species	Rabbit
Clonality	Monoclonal
Isotype	Rabbit IgG
Applications	WB IP
Species Reactivity	Human,Mouse,Rat
Immunogen Description	A synthetic peptide of human MAT1A
Other Names	MAT; SAMS; MATA1; SAMS1; MAT1A
Accession No.	Swiss-Prot:Q00266 Gene ID:4143
Uniprot	Q00266
GeneID	4143;
Calculated MW	44 kDa
SDS-PAGE MW	44 kDa
Formulation	50mM Tris-Glycine(pH 7.4), 0.15M NaCl, 40% Glycerol, 0.01% Sodium azide and 0.05% BSA
Storage	Store at 4°C short term. Aliquot and store at -20°C long term. Avoid freeze/thaw cycles.

Application Details

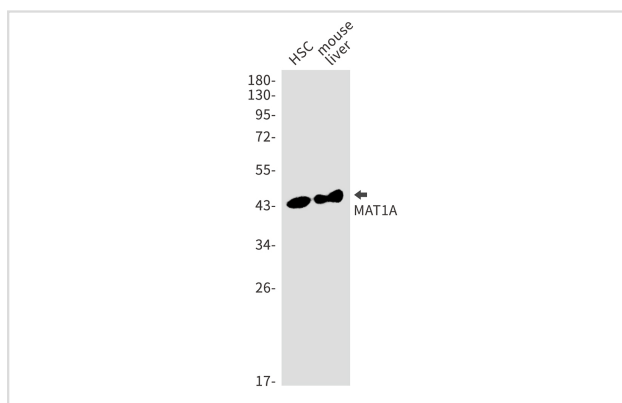
IP:1/20WB: 1/500-1/1000

Images



Western blot analysis of MAT1A in rat liver lysates using MAT1A antibody.

Western blot analysis of MAT1A in HSC, mouse liver lysates using MAT1A antibody.



Note: This product is for in vitro research use only