

Mesothelin Rabbit mAb

Catalog No: #57288

Package Size: #57288-1 50ul #57288-2 100ul

Orders: order@signalwayantibody.comSupport: tech@signalwayantibody.com

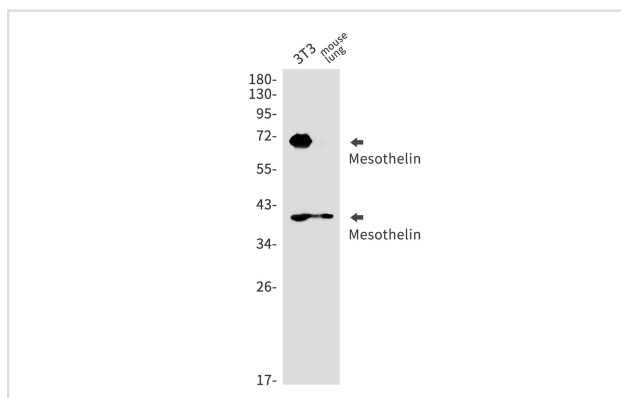
Description

Product Name	Mesothelin Rabbit mAb
Host Species	Rabbit
Clonality	Monoclonal
Isotype	Rabbit IgG
Applications	WB IP
Species Reactivity	Mouse
Immunogen Description	Recombinant protein of mouse Mesothelin
Other Names	Pre-pro-megakaryocyte-potentiating factor; MPF
Accession No.	Swiss-Prot:Q61468 Gene ID:56047
Uniprot	Q61468
GeneID	56047;
Calculated MW	70 kDa
SDS-PAGE MW	40,70 kDa
Formulation	50mM Tris-Glycine(pH 7.4), 0.15M NaCl, 40% Glycerol, 0.01% Sodium azide and 0.05% BSA
Storage	Store at 4°C short term. Aliquot and store at -20°C long term. Avoid freeze/thaw cycles.

Application Details

IP:1/20WB: 1/500-1/1000

Images



Western blot analysis of Mesothelin in 3T3, mouse lung lysates using Mesothelin antibody.

Note: This product is for in vitro research use only