

Mitochondrial Ribosomal Protein L11 Rabbit mAb

Catalog No: #57290

Package Size: #57290-1 50ul #57290-2 100ul

Orders: order@signalwayantibody.com

Support: tech@signalwayantibody.com

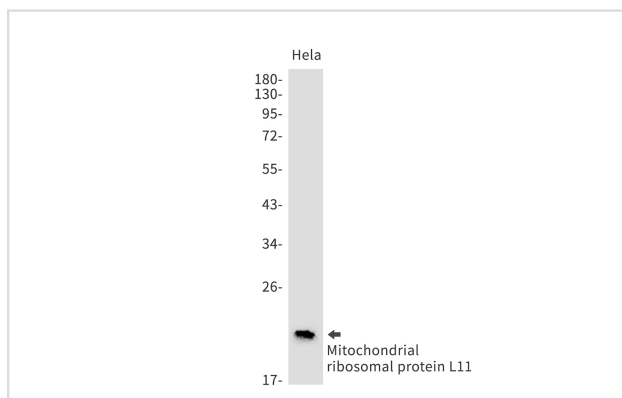
Description

Product Name	Mitochondrial Ribosomal Protein L11 Rabbit mAb
Host Species	Rabbit
Clonality	Monoclonal
Isotype	Rabbit IgG
Applications	WB IHC ICC
Species Reactivity	Human
Immunogen Description	A synthetic peptide of human Mitochondrial ribosomal protein L11
Other Names	MRPL11; CGI-113; 39S ribosomal protein L11; mitochondrial; L11mt; MRP-L11
Accession No.	Swiss-Prot:Q9Y3B7 Gene ID:65003
Uniprot	Q9Y3B7
GeneID	65003;
Calculated MW	21 kDa
SDS-PAGE MW	21 kDa
Formulation	50mM Tris-Glycine(pH 7.4), 0.15M NaCl, 40% Glycerol, 0.01% Sodium azide and 0.05% BSA
Storage	Store at 4°C short term. Aliquot and store at -20°C long term. Avoid freeze/thaw cycles.

Application Details

WB: 1/500-1/1000 IHC: 1/50-1/100 ICC: 1/50-1/200

Images



Western blot analysis of Mitochondrial ribosomal protein L11 in HeLa lysates using Mitochondrial Ribosomal Protein L11 antibody.

Note: This product is for in vitro research use only