

MMP26 Rabbit mAb

Catalog No: #57291

Package Size: #57291-1 50ul #57291-2 100ul

Orders: order@signalwayantibody.com

Support: tech@signalwayantibody.com

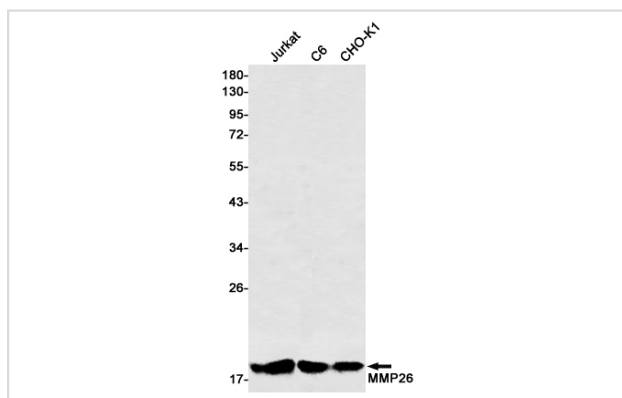
Description

Product Name	MMP26 Rabbit mAb
Host Species	Rabbit
Clonality	Monoclonal
Isotype	Rabbit IgG
Applications	WB
Species Reactivity	Human,Hamster,Rat
Immunogen Description	A synthetic peptide of human MMP26
Other Names	Matrix metalloproteinase-26; Endometase; Matrilysin-2
Accession No.	Swiss-Prot:Q9NRE1 Gene ID:56547
Uniprot	Q9NRE1
GeneID	56547;
Calculated MW	30 kDa
SDS-PAGE MW	19 kDa
Formulation	50mM Tris-Glycine(pH 7.4), 0.15M NaCl, 40% Glycerol, 0.01% Sodium azide and 0.05% BSA
Storage	Store at 4°C short term. Aliquot and store at -20°C long term. Avoid freeze/thaw cycles.

Application Details

WB: 1/500-1/1000

Images



Western blot analysis of MMP26 in Jurkat, C6, CHO-K1 lysates using MMP26 antibody.

Note: This product is for in vitro research use only