

MS2 Rabbit mAb

Catalog No: #57293

Package Size: #57293-1 50ul #57293-2 100ul

Orders: order@signalwayantibody.com

Support: tech@signalwayantibody.com

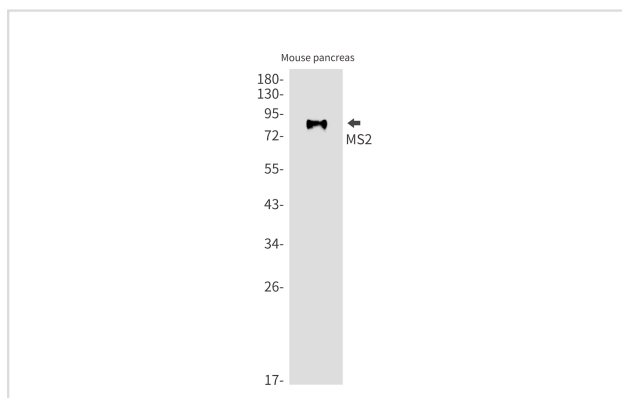
Description

Product Name	MS2 Rabbit mAb
Host Species	Rabbit
Clonality	Monoclonal
Isotype	Rabbit IgG
Applications	WB IP
Species Reactivity	Human,Mouse
Immunogen Description	A synthetic peptide of MS2
Other Names	MS2; CD156; CD156a
Accession No.	Swiss-Prot:P78325 Gene ID:101
Uniprot	P78325
GeneID	101;
Calculated MW	89 kDa
SDS-PAGE MW	89 kDa
Formulation	50mM Tris-Glycine(pH 7.4), 0.15M NaCl, 40% Glycerol, 0.01% Sodium azide and 0.05% BSA
Storage	Store at 4°C short term. Aliquot and store at -20°C long term. Avoid freeze/thaw cycles.

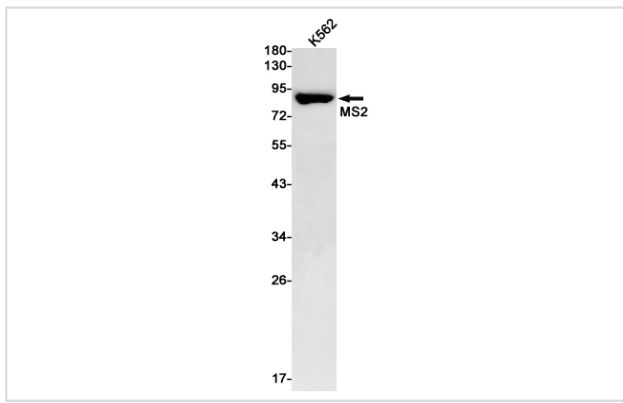
Application Details

IP:1/20WB: 1/500-1/1000

Images



Western blot analysis of MS2 in mouse pancreas lysates using MS2 antibody.



Western blot analysis of MS2 in K562 lysates using MS2 antibody.

Note: This product is for in vitro research use only