

OTUB1 Rabbit mAb

Catalog No: #57307

Package Size: #57307-1 50ul #57307-2 100ul

Orders: order@signalwayantibody.com

Support: tech@signalwayantibody.com

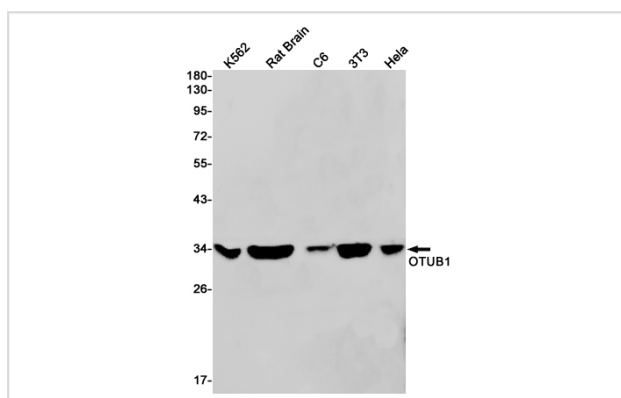
Description

Product Name	OTUB1 Rabbit mAb
Host Species	Rabbit
Clonality	Monoclonal
Isotype	Rabbit IgG
Applications	WB IP
Species Reactivity	Human,Mouse,Rat
Immunogen Description	A synthetic peptide of human OTUB1
Other Names	OTUB1; OTB1; OTU1; HSPC263; Ubiquitin thioesterase OTUB1; Deubiquitinating enzyme OTUB1; OTU domain-containing ubiquitin aldehyde-binding protein 1; Otubain-1; hOTU1; Ubiquitin-specific-processing protease OTUB1
Accession No.	Swiss-Prot:Q96FW1 Gene ID:55611
Uniprot	Q96FW1
GeneID	55611;
Calculated MW	31 kDa
SDS-PAGE MW	31 kDa
Formulation	50mM Tris-Glycine(pH 7.4), 0.15M NaCl, 40% Glycerol, 0.01% Sodium azide and 0.05% BSA
Storage	Store at 4°C short term. Aliquot and store at -20°C long term. Avoid freeze/thaw cycles.

Application Details

IP:1/20WB: 1/500-1/1000

Images



Western blot analysis of OTUB1 in K562, rat Brain, C6, 3T3, HeLa lysates using OTUB1 antibody.

Note: This product is for in vitro research use only