

Cadherin Rabbit mAb

Catalog No: #57310

Package Size: #57310-1 50ul #57310-2 100ul

Orders: order@signalwayantibody.com

Support: tech@signalwayantibody.com

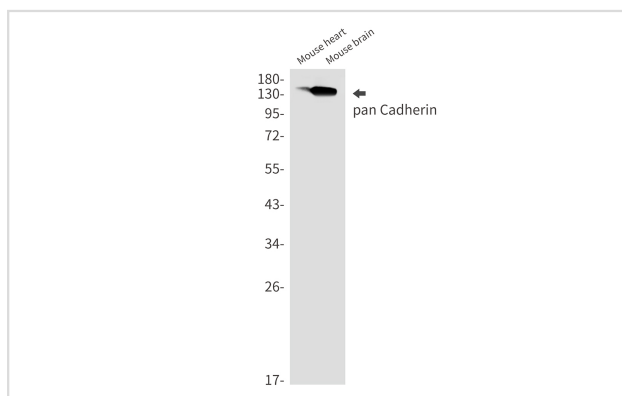
Description

Product Name	Cadherin Rabbit mAb
Host Species	Rabbit
Clonality	Monoclonal
Isotype	Rabbit IgG
Applications	WB IHC IP ICC
Species Reactivity	Human,Mouse,Rat,Hamster
Immunogen Description	A synthetic peptide of human pan Cadherin
Other Names	CDHP; CDHE; HJMD; PCAD; CDHN; P-cadherin; E-cadherin; N-cadherin; Cadherin-1; Cadherin-2; Cadherin-3
Accession No.	Swiss-Prot:P12830/P22223/P19022 Gene ID:999/1001/1000
Uniprot	P12830/P22223/P19022
GeneID	999/1001/1000;
Calculated MW	97 kDa
SDS-PAGE MW	130-150 kDa
Formulation	50mM Tris-Glycine(pH 7.4), 0.15M NaCl, 40% Glycerol, 0.01% Sodium azide and 0.05% BSA
Storage	Store at 4°C short term. Aliquot and store at -20°C long term. Avoid freeze/thaw cycles.

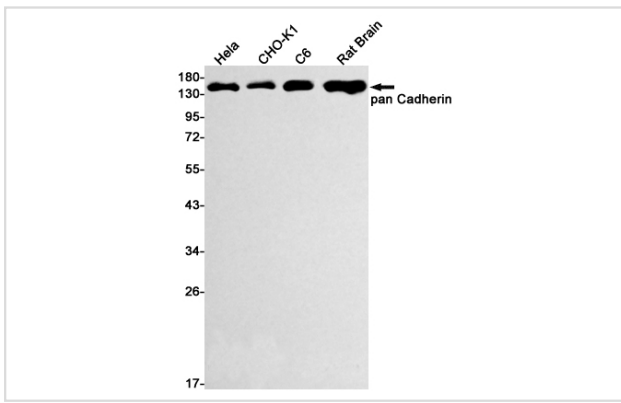
Application Details

IP:1/20WB: 1/500-1/1000IHC: 1/50-1/100ICC: 1/50-1/200

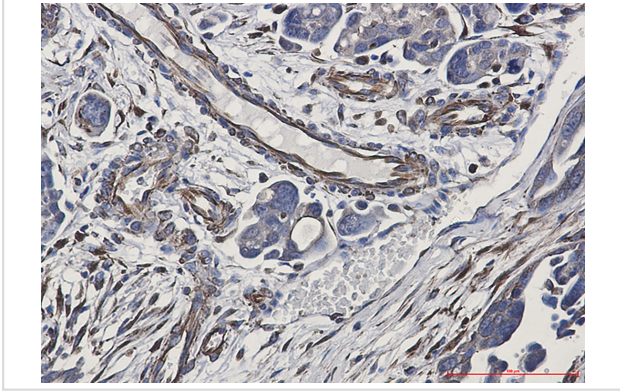
Images



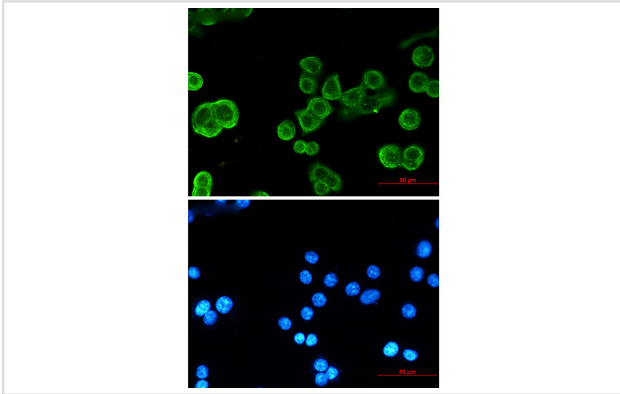
Western blot analysis of pan Cadherin in mouse heart, mouse brain lysates using Cadherin antibody.



Western blot analysis of pan Cadherin in Hela, CHO-K1, C6, rat Brain lysates using pan Cadherin antibody.



Immunohistochemistry analysis of paraffin-embedded Human Cholangiocarcinoma using pan Cadherin antibody. High-pressure and temperature Sodium Citrate pH 6.0 was used for antigen retrieval.



Immunocytochemistry analysis of pan Cadherin (green) in MCF-7 using pan Cadherin antibody, and DAPI (blue).

Note: This product is for in vitro research use only