

POLDIP2 Rabbit mAb

Catalog No: #57318

Package Size: #57318-1 50ul #57318-2 100ul

Orders: order@signalwayantibody.com

Support: tech@signalwayantibody.com

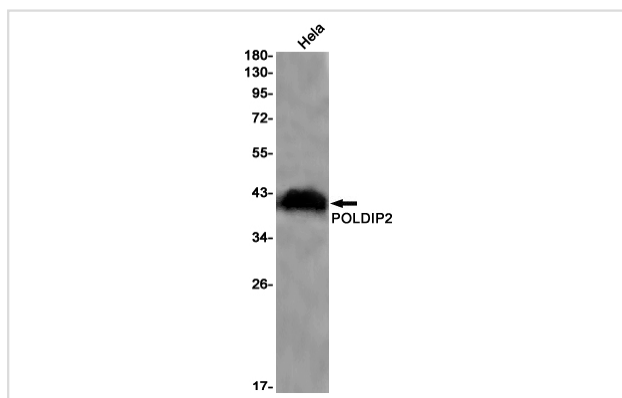
Description

Product Name	POLDIP2 Rabbit mAb
Host Species	Rabbit
Clonality	Monoclonal
Isotype	Rabbit IgG
Applications	WB IP
Species Reactivity	Human
Immunogen Description	A synthetic peptide of human POLDIP2
Other Names	p38; POLD4; PDIP38
Accession No.	Swiss-Prot:Q9Y2S7 Gene ID:26073
Uniprot	Q9Y2S7
GeneID	26073;
Calculated MW	42 kDa
SDS-PAGE MW	38 kDa
Formulation	50mM Tris-Glycine(pH 7.4), 0.15M NaCl, 40% Glycerol, 0.01% Sodium azide and 0.05% BSA
Storage	Store at 4°C short term. Aliquot and store at -20°C long term. Avoid freeze/thaw cycles.

Application Details

IP:1/20WB: 1/500-1/1000

Images



Western blot analysis of POLDIP2 in HeLa lysates using POLDIP2 antibody.

Note: This product is for in vitro research use only