

PP1C alpha/beta Rabbit mAb

Catalog No: #57319

Package Size: #57319-1 50ul #57319-2 100ul

Orders: order@signalwayantibody.com

Support: tech@signalwayantibody.com

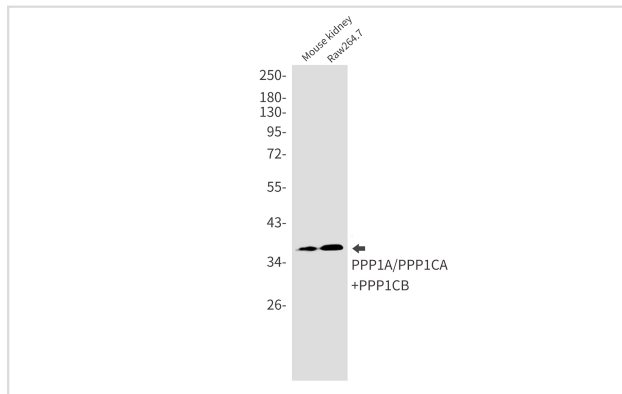
Description

Product Name	PP1C alpha/beta Rabbit mAb
Host Species	Rabbit
Clonality	Monoclonal
Isotype	Rabbit IgG
Applications	WB IHC IP
Species Reactivity	Human,Mouse,Rat
Immunogen Description	A synthetic peptide of human PPP1CA+PPP1CB
Other Names	Alpha isoform serine threonine protein phosphatase PP1alpha 1 catalytic subunit; Catalytic subunit; PP1A; PP1A_HUMAN; PP1alpha; PP2C ALPHA; PP2CA; Ppp1ca; Protein Phosphatase 2C Alpha Isoform; Serine threonine protein phosphatase PP1 alpha catalytic subunit; Serine threonine protein phosphatase PP1 alpha catalytic subunit protein phosphatase 1; Serine/threonine-protein phosphatase PP1-alpha catalytic subunit.
Accession No.	Swiss-Prot:P62136 Gene ID:5499
Uniprot	P62136
GeneID	5499;
Calculated MW	38 kDa
SDS-PAGE MW	38 kDa
Formulation	50mM Tris-Glycine(pH 7.4), 0.15M NaCl, 40% Glycerol, 0.01% Sodium azide and 0.05% BSA
Storage	Store at 4°C short term. Aliquot and store at -20°C long term. Avoid freeze/thaw cycles.

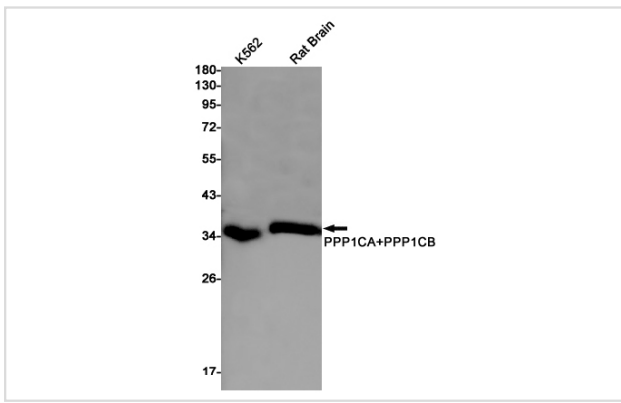
Application Details

IP:1/20WB: 1/500-1/1000IHC: 1/50-1/100

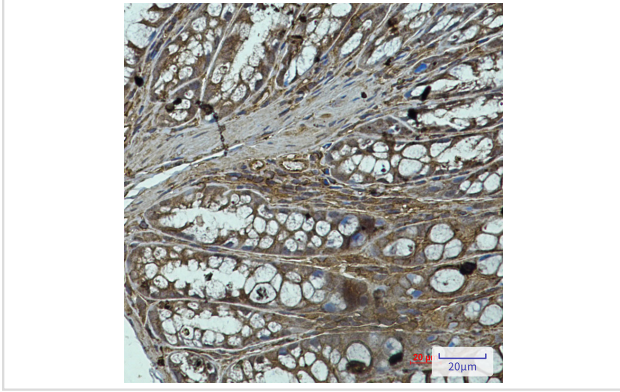
Images



Western blot analysis of PPP1A/PPP1CA+PPP1CB in mouse kidney, Raw264.7 lysates using PPP1A/PPP1CA+PPP1CB antibody.



Western blot analysis of PPP1CA+PPP1CB in K562, rat Brain lysates using PPP1CA+PPP1CB antibody



Immunohistochemistry analysis of paraffin-embedded mouse colon using PP1C alpha/beta antibody. High-pressure and temperature Sodium Citrate pH 6.0 was used for antigen retrieval.

Note: This product is for in vitro research use only